

TACAN Y RWY 33

TACAN BAB Chan 23	APCH CRS 317°	Rwy ldg TDZE Arprt Elev	12,001 105 113
----------------------	------------------	-------------------------------	----------------------

- (USAF)

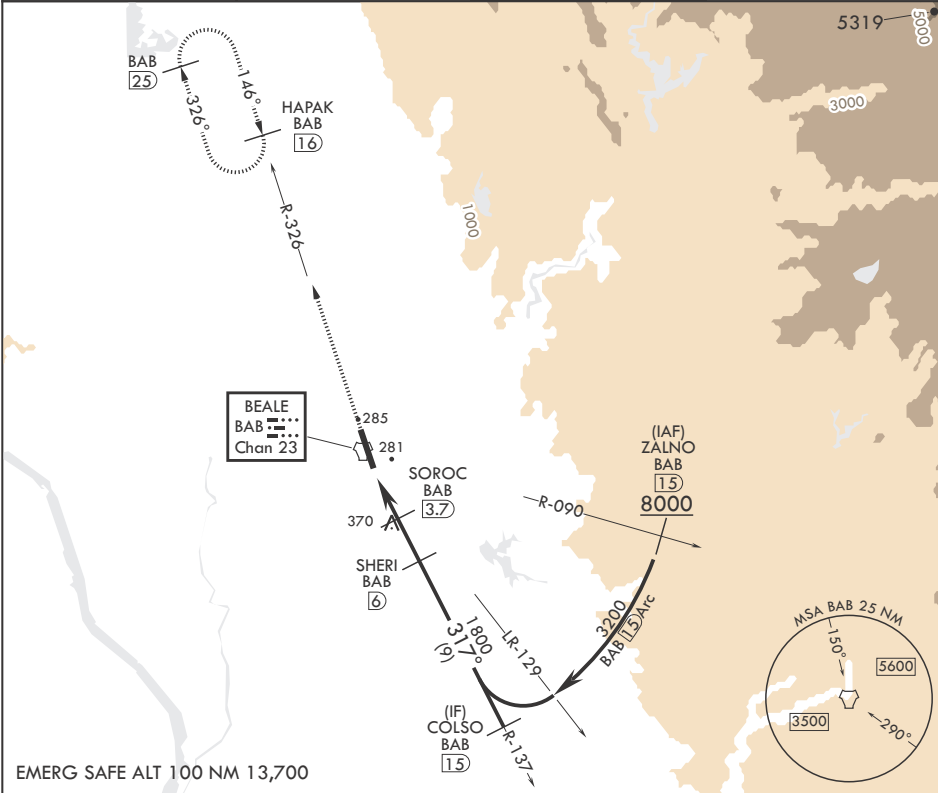
BEALE AFB (KBAB)

⚠ * When ALS inop, increase CAT AB RVR to 55 and vis to 1 mile, CAT CDE vis to 1 1/4 miles.
** Circling not authorized E of Rwy 15-33.

ALSF-1

MISSED APPROACH: Climb to 3600 intercept BAB TACAN R-326 to HAPAK and hold.

ATIS★ 124.55 273.5	NORCAL APP CON 125.4 259.1	TOWER★ 119.4 284.75	GND CON 121.6 257.75
-----------------------	-------------------------------	------------------------	-------------------------



EMERG SAFE ALT 100 NM 13,700

3600
BAB
R-326

HAPAK
BAB
16

COLSO
BAB
15

ELEV 113

TDZE 105

BAB TACAN

EGUYO
BAB
1.5

BAB
2.2

SOROC
BAB
3.7

SHERI
BAB
6

317°

3200

1800

1000

≤ 3.09°
TCH 51

.5

2.2 NM

2.3 NM

CATEGORY	A	B	C	D	E
S-33*	540/24	435 (500-½)	540/40	435	(500-¾)
C CIRCLING**	600-1	487 (500-1)	600-1½ 487 (500-1½)	800-2¼ 687 (700-2¼)	800-2½ 687 (700-2½)

HIRL all Rwy

TACAN Y RWY 33

SW-2, 07 AUG 2025 to 04 SEP 2025

SW-2, 07 AUG 2025 to 04 SEP 2025