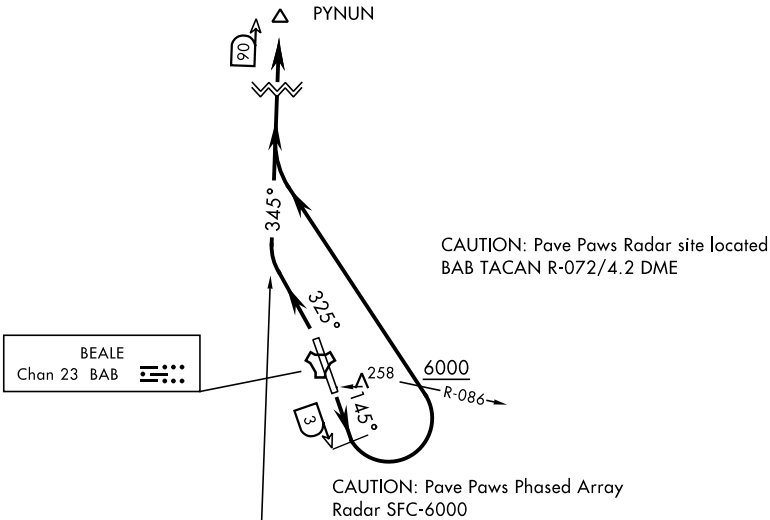


ATIS ★
124.55 273.5
GND CON
121.6 257.75
BEALE TOWER ★
119.4 284.75
NORCAL DEP CON
125.4 259.1

[USAF]

6768



FOR USE BY
9 RW AIRCRAFT ONLY

TAKEOFF MINIMUMS

Rwy 15: 2500-3 or standard with a minimum climb of
242 ft/NM to 2800.
Rwy 33: Standard.

SACRAMENTO
115.2 SAC
Chan 99

Ⓐ to 2800

Ⓑ to 6000 * Minimum Climb Rate † ATC Climb Rate

Rwy	Knots	60	120	180	240	300	360
*15Ⓐ	V/V(fpm)	242	484	726	968	1210	1452
†15Ⓑ	V/V(fpm)	590	1180	1770	2360	2950	3540

DEPARTURE ROUTE DESCRIPTION

TAKEOFF RWY 15: Fly heading 145° until BAB TACAN 3 DME, turn left heading 300° to intercept SAC VORTAC R-345 to PYNUN. Cross BAB R-086 at or above 6000. Then via assigned route.

TAKEOFF RWY 33: Fly heading 325° intercept SAC VORTAC R-345 to PYNUN. Then via assigned route.