

ILS or LOC Y RWY 33

LOC I-MIZ 109.5	APCH CRS 325°	Rwy ldg TDZE Arprt Elev 113
--------------------	------------------	--------------------------------

- (USAF)

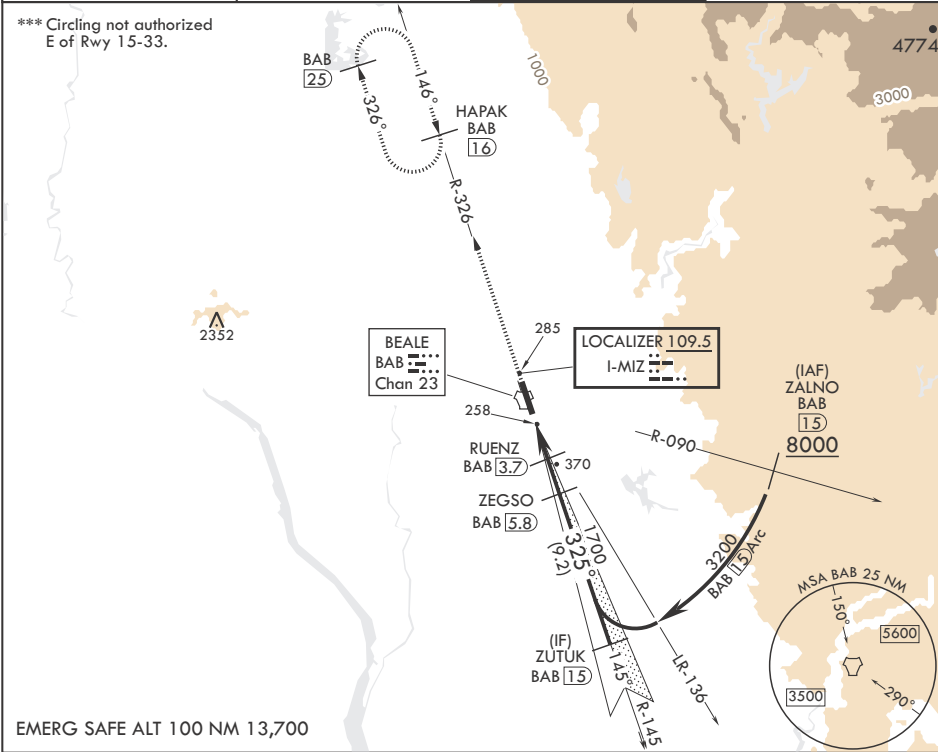
BEALE AFB (KBAB)

RADAR or DME required

▼ * When ALS inop, increase RVR to 40 and vis to 3/4 mile.
** When ALS inop, increase CAT AB RVR to 55 and vis to 1 mile;
CAT CDE RVR to 60 and vis to 1 1/8 miles.

ALSF-1 A1	MISSED APPROACH: Climb to 3600 intercept BAB TACAN R-326 to HAPAK and hold.
--------------	--

ATIS★ 124.55 273.5	NORCAL APP CON 125.4 259.1	TOWER★ 119.4 284.75	GND CON 121.6 257.75
-----------------------	-------------------------------	------------------------	-------------------------



ELEV 113

TDZE 105

CATEGORY	A	B	C	D	E
S-ILS 33*	305/24		200	(200- $\frac{1}{4}$)	
S-LOC 33**	520/24	415 (500- $\frac{1}{2}$)	520/40	415	(500- $\frac{3}{4}$)
C CIRCLING***	600-1	487 (500-1)	600-1 $\frac{1}{2}$ 487 (500-1 $\frac{1}{2}$)	800-2 $\frac{1}{4}$ 687 (700-2 $\frac{1}{4}$)	800-2 $\frac{1}{2}$ 687 (700-2 $\frac{1}{2}$)

HIRL all Rwys

HIRL all Rwys

ILS or LOC Y RWY 33

SW-2, 07 AUG 2025 to 04 SEP 2025

SW-2, 07 AUG 2025 to 04 SEP 2025