

MARYSVILLE, CALIFORNIA

HI-TACAN Z RWY 33

TACAN BAB Chan 23	APCH CRS 317°	Rwy ldg TDZE Arprt Elev	12,001 105 113
----------------------	------------------	-------------------------------	----------------------

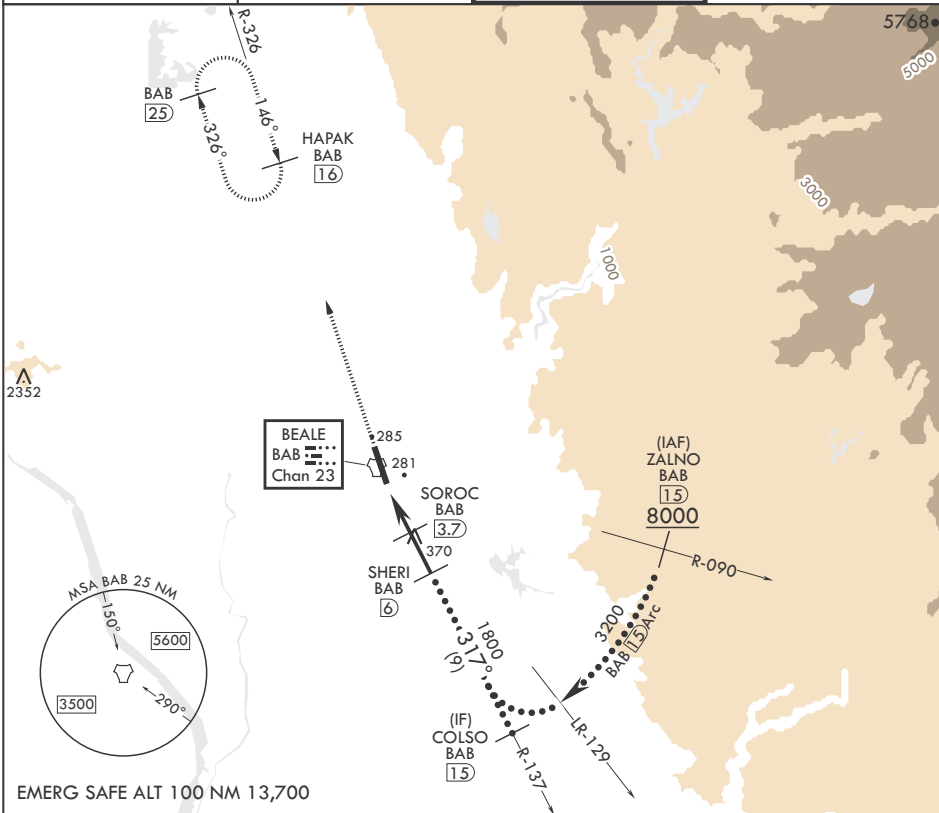
-(USAF)

BEALE AFB (KBAB)

⚠ \*When ALS inop, increase CAT CDE vis to 1 1/4 miles.  
\*\*Circling not authorized NE of Rwy 15-33.

ALSF-1  
A1  
MISSED APPROACH: Climb to 3600, intercept BAB TACAN R-326 to HAPAK and hold.

ATIS★ 124.55 273.5	NORCAL APP CON 125.4 259.1	TOWER★ 119.4 284.75	GND CON 121.6 257.75
-----------------------	-------------------------------	------------------------	-------------------------



EMERG SAFE ALT 100 NM 13,700

3600 BAB R-326	HAPAK BAB 16	COLSO BAB 15	ELEV 113	TDZE 105
BAB TACAN	EGUYO BAB 1.5	BAB 2.2	SOROC BAB 3.7	SHERI BAB 6
1000				
≤ 3.09° TCH 51				
.5 2.2 NM 2.3 NM				
CATEGORY	C	D	E	
S-33*	540/40	435	(500-34)	
CIRCLING**	600-1½ 487 (500-1½)	800-2¼ 687 (700-2¼)	800-2½ 687 (700-2½)	
HIRL all Rws				

MARYSVILLE, CALIFORNIA

39°08'N - 121°26'W

BEALE AFB (KBAB)

Amtdt 6 25JAN24

HI-TACAN Z RWY 33

SW-2, 07 AUG 2025 to 04 SEP 2025

SW-2, 07 AUG 2025 to 04 SEP 2025