

MARYSVILLE, CALIFORNIA

HI-TACAN Z RWY 15

TACAN BAB Chan 23	APCH CRS 153°	Rwy Idg 12,001 TDZE 113 Arpt Elev 113
----------------------	------------------	---------------------------------------------

- (USAF)

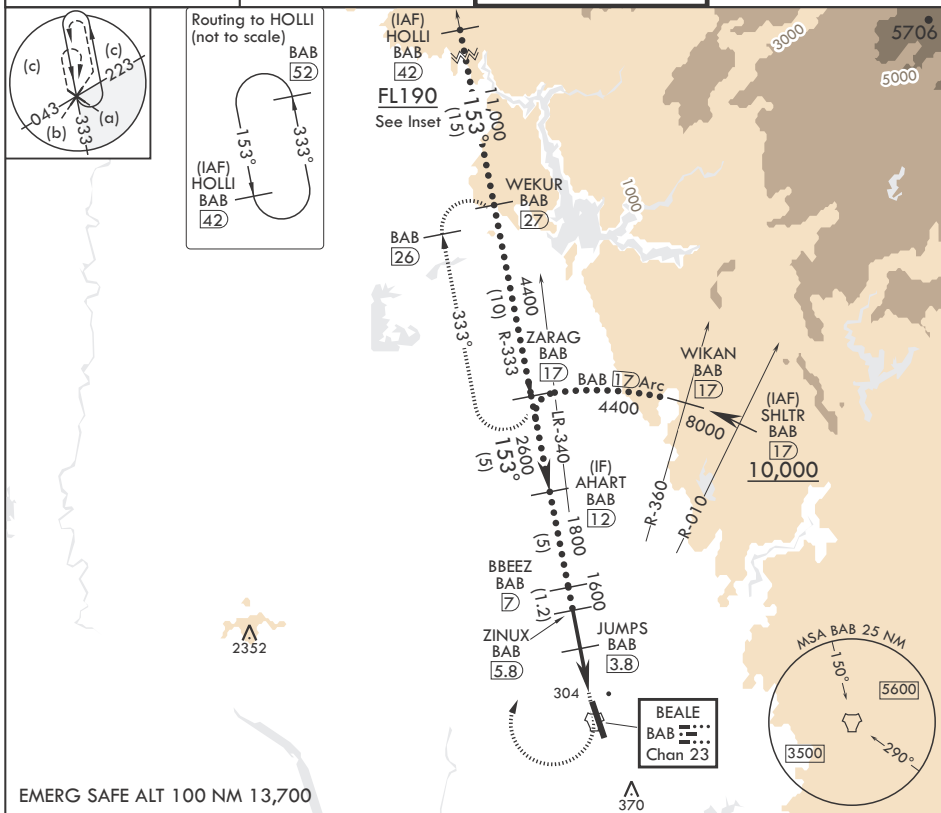
BEALE AFB (KBAB)

T * When ALS inop, increase vis to 1 3/8 miles.
** Circling not authorized E of Rwy 15-33.

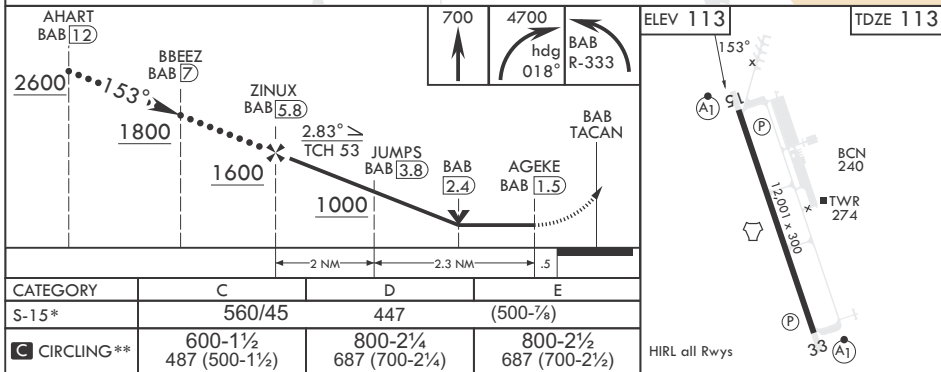
ALSF-1

MISSED APPROACH: Climb to 700 on heading 153°, then climbing right turn to 4700 heading 018° to intercept BAB R-333 to ZARAG and hold, continue climb in hold to 4700.

<p>ATIS★</p> <p>124.55 273.5</p>	<p>NORCAL APP CON</p> <p>125.4 259.1</p>	<p>TOWER★</p> <p>119.4 284.75</p>	<p>GND CON</p> <p>121.6 257.75</p>
----------------------------------	------------------------------------------	-----------------------------------	------------------------------------



EMERG SAFE ALT 100 NM 13,700



MARYSVILLE, CALIFORNIA

39°08'N - 121°26'W

BEALE AFB (KBAB)

Amdt 6 25JAN24

HI-TACAN Z RWY 15

SW-2, 07 AUG 2025 to 04 SEP 2025

SW-2, 07 AUG 2025 to 04 SEP 2025