

MARYSVILLE, CALIFORNIA

HI-ILS or LOC Z RWY 33

LOC I-MIZ 109.5	APCH CRS 325°	Rwy ldg 12,001
		TDZE 105
		Arprt Elev 113

- (USAF)

BEALE AFB (KBAB)

RADAR or DME required

⚠ \* When ALS inop, increase CAT CDE RVR to 40 and vis to 3/4 mile.  
\*\* When ALS inop, increase CAT CDE RVR to 60 vis to 1 1/8 miles.

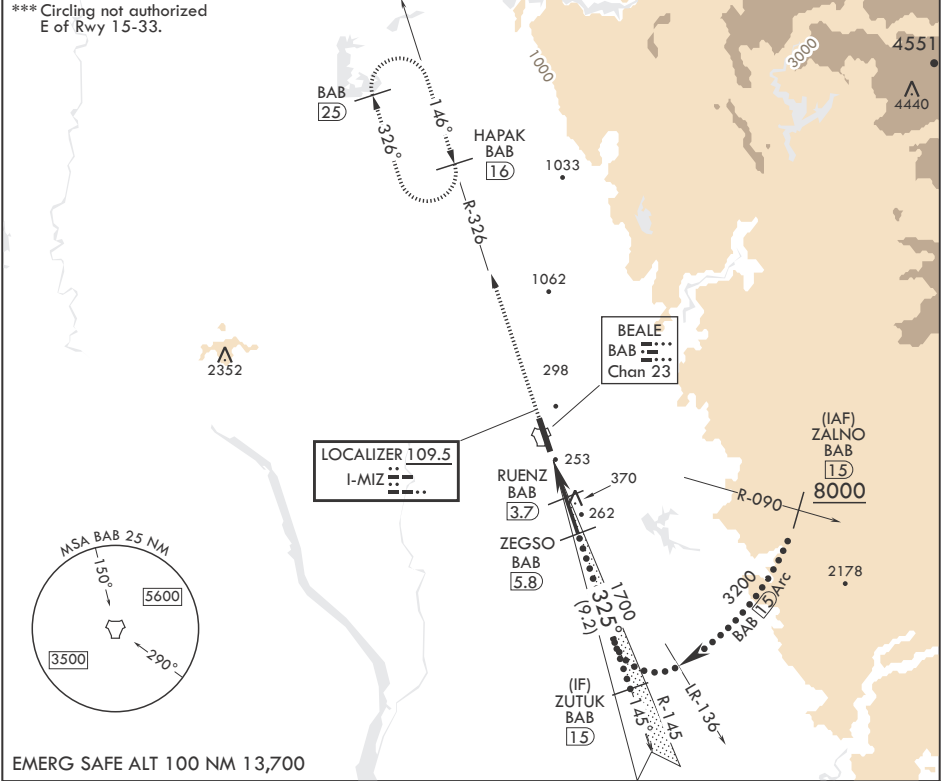
ALSF-1



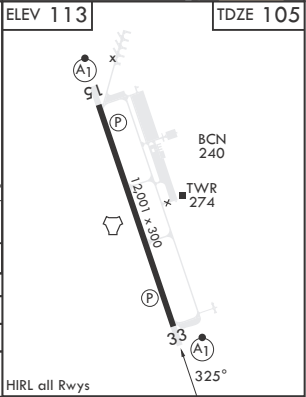
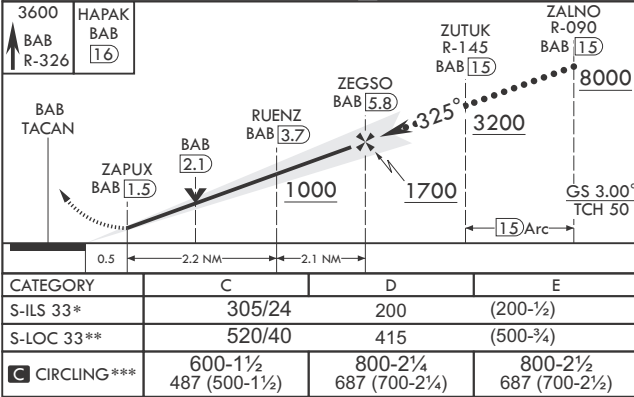
MISSED APPROACH: Climb to 3600 intercept BAB R-326 to HAPAK and hold.

ATIS★ 124.55 273.5	NORCAL APP CON 125.4 259.1	TOWER★ 119.4 284.75	GND CON 121.6 257.75
-----------------------	-------------------------------	------------------------	-------------------------

\*\*\* Circling not authorized  
E of Rwy 15-33.



EMERG SAFE ALT 100 NM 13,700



MARYSVILLE, CALIFORNIA

39°08'N - 121°26'W

BEALE AFB (KBAB)

Amtdt 6 25JAN24

HI-ILS or LOC Z RWY 33

SW-2, 07 AUG 2025 to 04 SEP 2025

SW-2, 07 AUG 2025 to 04 SEP 2025