

MARYSVILLE, CALIFORNIA

HI-ILS or LOC Z RWY 15

LOC I-BAB  
109.5

APCH CRS  
145°

Rwy Idg 12,001  
TDZE 113  
Arpt Elev 113

- (USAF)

BEALE AFB (KBAB)

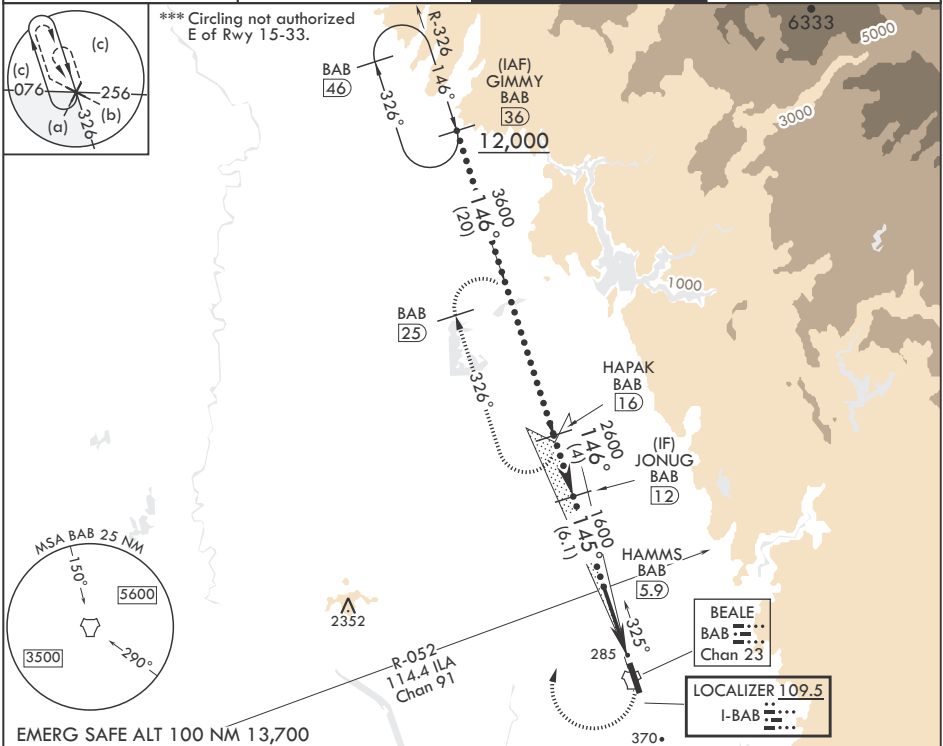
RADAR or DME required

ALSF-1

MISSED APPROACH: Climb to 700 on heading 145°, then climbing right turn to 4400 heading 011° to intercept BAB R-326 to HAPAK and hold, continue climb in hold to 4400.

\* When ALS inop, increase CAT CDE RVR to 40 and vis to 3/4 mile.  
\*\* When ALS inop, increase CAT CDE vis to 1 3/8 miles.

ATIS★ 124.55 273.5	NORCAL APP CON 125.4 259.1	TOWER★ 119.4 284.75	GND CON 121.6 257.75
-----------------------	-------------------------------	------------------------	-------------------------



JONUG BAB 12

VGSI and glideslope not coincident.  
(VGSI Angle 2.75/TCH 53)

2600

145°

1600

GS 2.75°  
TCH 47

700

4400

hdg 011°

BAB R-326

BAB TACAN

BAB HEGOP 1.5

BAB 2.5

4.5 NM

0.5

ELEV 113

TDZE 113

145°

BCN 240

TWR 274

12001 x 3000

33

HI-ILS or LOC Z RWY 15

CATEGORY	C	D	E
S-ILS 15*	313/24	200	(200-½)
S-LOC 15**	600/50	487	(500-1)
CIRCLING***	600-1½ 487 (500-1½)	800-2¼ 687 (700-2¼)	800-2½ 687 (700-2½)