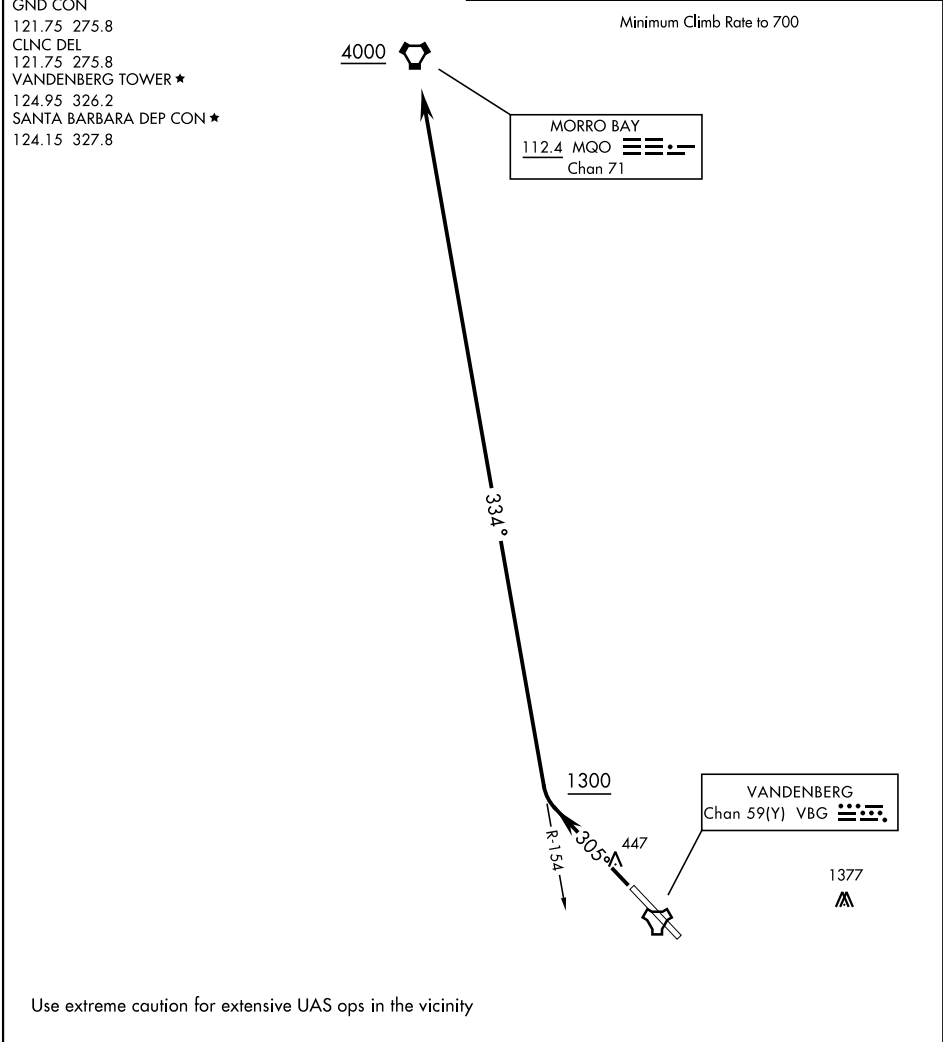


[USF]		LOMPOC, CALIFORNIA						
ATIS	Rwy	Knots	60	120	180	240	300	360
133.125 257.975	30	V/V(fpm)	280	560	840	1120	1400	1680



DEPARTURE ROUTE DESCRIPTION

TAKEOFF RWY 30: Climb on track 305° to intercept MQO VORTAC R-154 at or above 1300 direct to MQO. Cross MQO at or above 4000. Expect vectors to first filed fix/route prior to MQO.