

TACAN RWY 12

TACAN VBG Chan 59(Y)	APCH CRS 129°	Rwy Idg 15,000 TDZE 265 Arpt Elev 368
--------------------------------	-------------------------	--

[USSF]

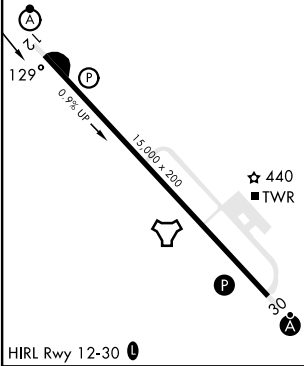
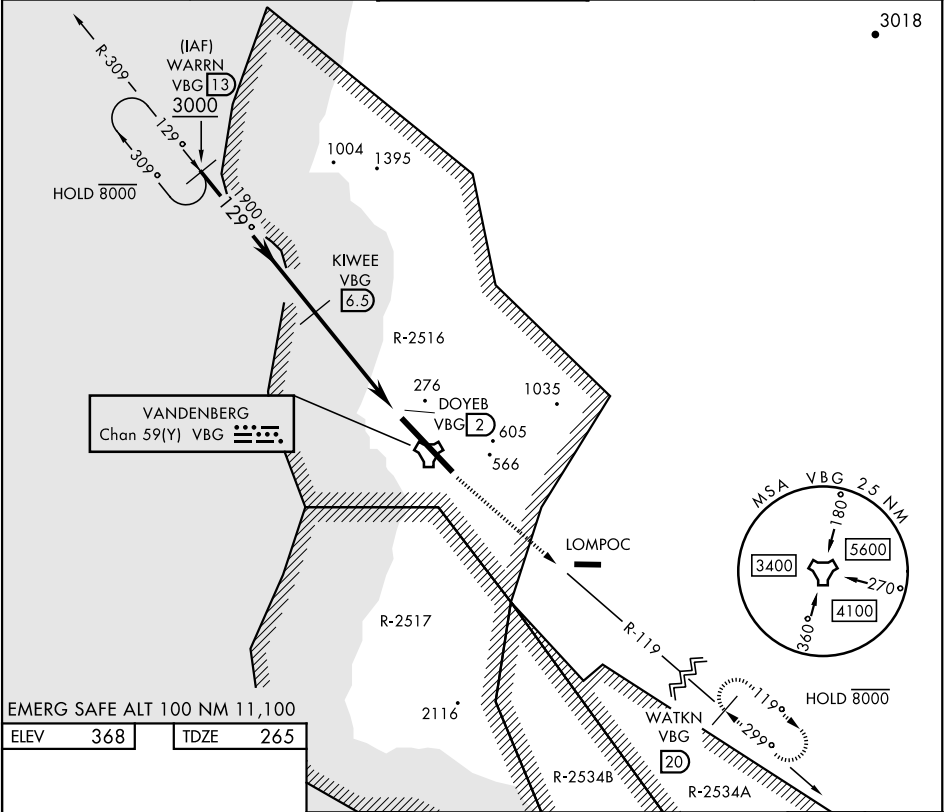
VANDENBERG SFB (KVBG)

▼ * When ALS inop, increase CAT AB RVR to 55 and vis to 1 mile; CAT CDE vis to 1½ miles.

ALS-F-2

MISSED APPROACH: Climb out VBG TACAN R-119 until 20 DME (WATKN) and hold. Continue climb in hold maintain 7000.

ATIS 133.125 257.975	SANTA BARBARA APP/DEP CON★ 124.15 327.8	TOWER★ 124.95 0 (CTAF) 326.2	GND CON 121.75 275.8	CLNC DEL 121.75 275.8
--------------------------------	--	---	--------------------------------	---------------------------------



WARRN VBG 13		KIWEE VBG 6.5		DOYEB VBG 2		WATKN VBG 20	
3000		1900		7000		TACAN	
129°		3.03° TCH 52		4.5 NM		0.5	
CATEGORY	A	B	C	D	E		
S-12*	740/24	475 (400-½)	740/50	475 (400-1)			
CIRCLING	980-1	1000-1	1020-1¾	1180-2¾	1560-3		
	612 (700-1)	632 (700-1)	652 (700-1¾)	812 (900-2¾)	1192 (1200-3)		

TACAN RWY 12

SW-3, 07 AUG 2025 to 04 SEP 2025

SW-3, 07 AUG 2025 to 04 SEP 2025