

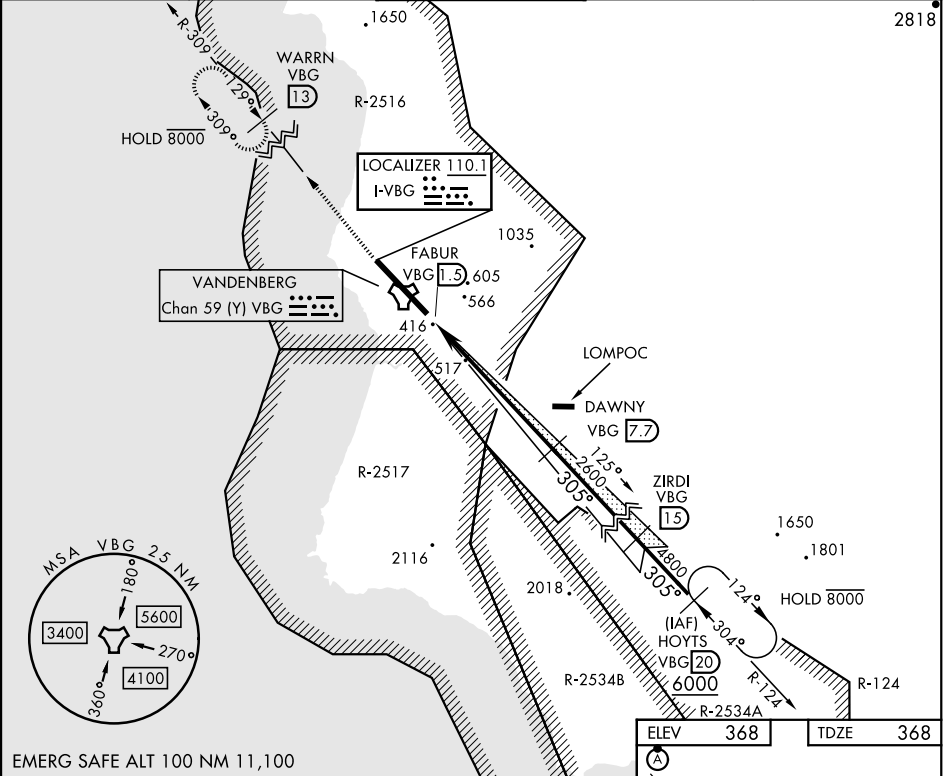
LOC I-VBG 110.1	APCH CRS 305°	Rwy Idg 15,000 TDZE 368 Arpt Elev 368
---------------------------	-------------------------	--

[USSF]

VANDENBERG SFB (KVBG)

DME required ▼ * When ALS inop, increase RVR to 40 and vis to ¾ mile. ** When ALS inop, increase CAT AB RVR to 55 and vis to 1 mile, CAT CDE vis to 1½ miles.	ALS-F-2 A	MISSED APPROACH: Climb out VBG TACAN R-309 to WARRN and hold. Continue climb in hold maintain 4000.
---	--------------	---

ATIS 133.125 257.975	SANTA BARBARA APP/DEP CON* 124.15 327.8	TOWER* 124.95 (CTAF) 326.2	GND CON 121.75 275.8	CLNC DEL 121.75 275.8
--------------------------------	--	---	--------------------------------	---------------------------------



4000 ↑ VBG R-309	WARRN VBG 13	VGSI and ILS Glideslope not coincident.			DAWNY VBG 7.8	ZIRDI VBG 15	HOYTS VBG 20	6000
		FABUR VBG 1.5	VBG 2.4	2600	4800	305°		
		0.5 NM			6.3 NM	GS 3.00° TCH 72		
CATEGORY	A		B	C	D	E		
S-ILS 30 *	568/24		200	(200-½)				
S-LOC/ DME 30 **	900/24 532 (600-½)		900/55 532 (600-1)					
CIRCLING	980-1 612 (700-1)	1000-1 632 (700-1)	1020-1¾ 652 (700-1¾)	1180-2¾ 812 (900-2¾)	1560-3 1192(1200-3)			

SW-3, 07 AUG 2025 to 04 SEP 2025

SW-3, 07 AUG 2025 to 04 SEP 2025