

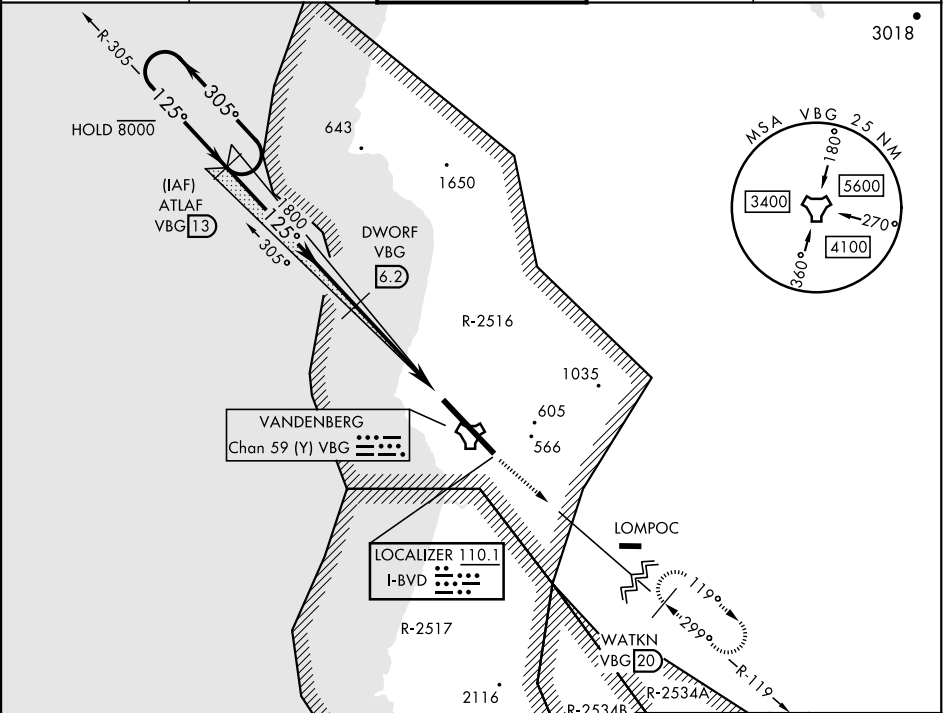
LOC I-BVD 110.1	APCH CRS 125°	Rwy Idg 15,000 TDZE 265 Arpt Elev 368
---------------------------	-------------------------	--

[USSF]

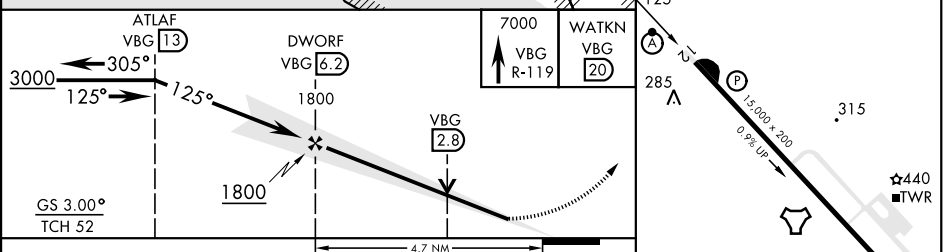
VANDENBERG SFB (KVBG)

DME required ▼ *When ALS inop, increase RVR to 40 and vis to ¾ mile. **When ALS inop, increase CAT AB RVR to 55 and vis to 1 mile, CAT CDE vis to 1 ¼ miles.	ALSF-2 A	MISSED APPROACH: Climb out VBG TACAN R-119 until 20 DME (WATKN) and hold. Continue climb in hold maintain 7000.
--	-------------	---

ATIS 133.125 257.975	SANTA BARBARA APP/DEP CON ★ 124.15 327.8	TOWER ★ 124.950 (CTAF) 326.2	GND CON 121.75 275.8	CLNC DEL 121.75 275.8
--------------------------------	---	---	--------------------------------	---------------------------------



EMERG SAFE ALT 100 NM 11,100



CATEGORY	A	B	C	D	E
S-ILS 12 *	465/24		200	(100-½)	
S-LOC/ DME 12 **	700/24 435 (400-½)		700/40 435 (400-¾)		
C CIRCLING	980-1 612 (700-1)	1000-1 632 (700-1)	1020-1¾ 652 (700-1¾)	1180-2¾ 812 (900-2¾)	1560-3 1192 (1200-3)

HIRL Rwy 12-30	FAF to MAP 4.7 NM				
Knots	60	90	120	150	180
Min:Sec	4:42	3:08	2:21	1:53	1:34

SW-3, 07 AUG 2025 to 04 SEP 2025

SW-3, 07 AUG 2025 to 04 SEP 2025