

WAAS CH 82201 W27A	APP CRS 269°	Rwy Idg TDZE Apt Elev	5401 818 818
--	------------------------	-----------------------------	---

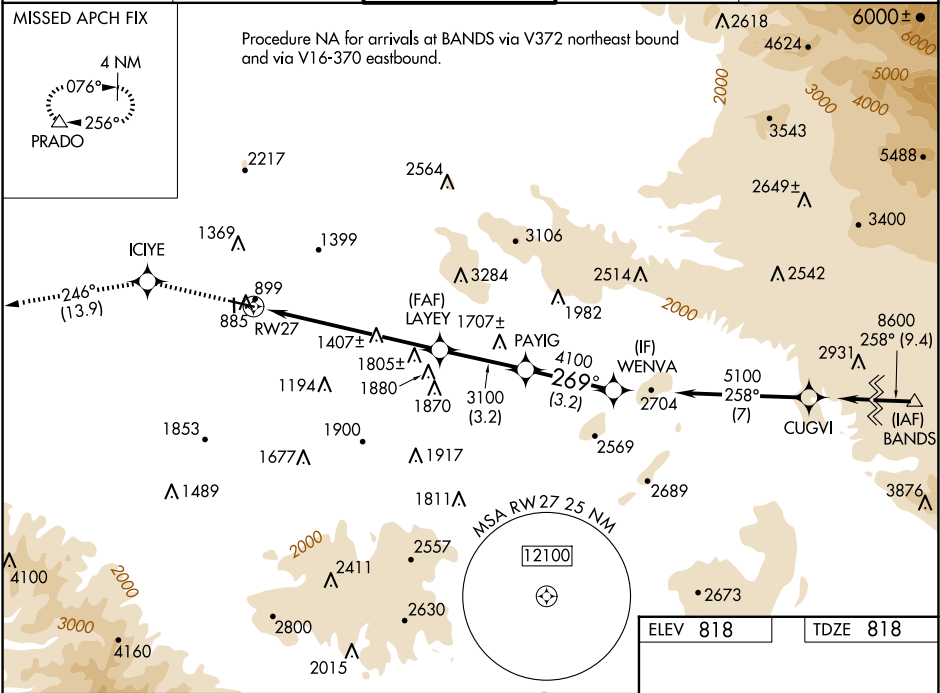
RNAV (GPS) RWY 27

RIVERSIDE MUNI (RAL)

DME/DME RNP -0.3 NA.
For uncompensated Baro-VNAV systems, LNAV/VNAV NA below -16°C (4°F) or above 46°C (116°F).
Circling NA for Cat D north of Rwy 9-27.
Visibility reduction by helicopters NA.

MISSED APPROACH: Climb to 4000 direct ICIYE and via 246° track to PRADO and hold.

ATIS 128.8	SOCAL APP CON 135.4 377.125	RIVERSIDE TOWER ★ 121.0 (CTAF) 0 257.8	GND CON 124.12	UNICOM 122.95
----------------------	---------------------------------------	---	--------------------------	-------------------------



4000	ICIYE	tr 246°	PRADO	Procedure Turn NA	WENVA
*LNAV only					
CATEGORY	A	B	C	D	
LPV DA	1236-1½ 418 (500-1½)				
LNAV/VNAV DA	1368-2 550 (600-2)				
LNAV MDA	2100-1¼ 1282 (1300-1¼)	2100-1½ 1282 (1300-1½)	2100-3	1282 (1300-3)	
CIRCLING	2100-2	1282 (1300-2)	2100-3	1282 (1300-3)	

