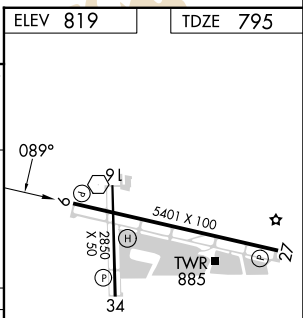


ILS or LOC RWY 9
RIVERSIDE MUNI (RAL)

SW-3, 07 AUG 2025 to 04 SEP 2025

SW-3, 07 AUG 2025 to 04 SEP 2025



MIRL Rwy's 9-27 and 16-34 1					
FAF to MAP 5.3 NM					
Knots	60	90	120	150	180
Min:Sec	5:18	3:32	2:39	2:07	1:46