

TEXOMA FIVE DEPARTURE


LONE STAR DEP CON
124.3 282.275
ATIS
133.4
CLNC DEL
119.55
GND CON
121.6
ADDISON TOWER ★
126.0 (CTAF) 239.0

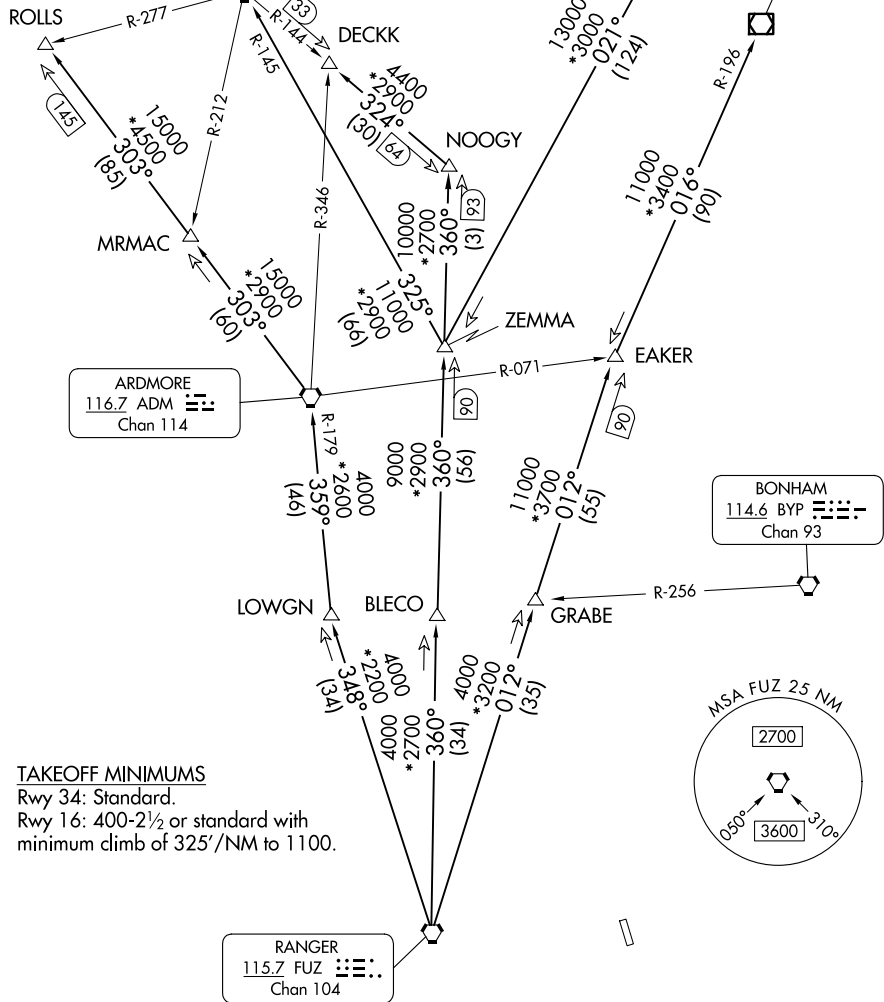
**TOP ALTITUDE:
ASSIGNED BY ATC**

TULSA
114.4 TUL : :
Chan 91

RADAR and DME required.

WILL ROGERS
114.1 IRW 
Chan 88

OKMULGEE
114.9 OKM 
Chan 96



TAKEOFF MINIMUMS

Rwy 34: Standard.

Rwy 16: 400-2½ or standard with minimum climb of 325'/NM to 1100.

NOTE: Chart not to scale.

(CONTINUED ON FOLLOWING PAGE)

TEXOMA FIVE DEPARTURE

(TEX5.FUZ) 25JAN24

DALLAS, TEXAS

ADDISON (ADS)

SC-2, 07 AUG 2025 to 04 SEP 2025