

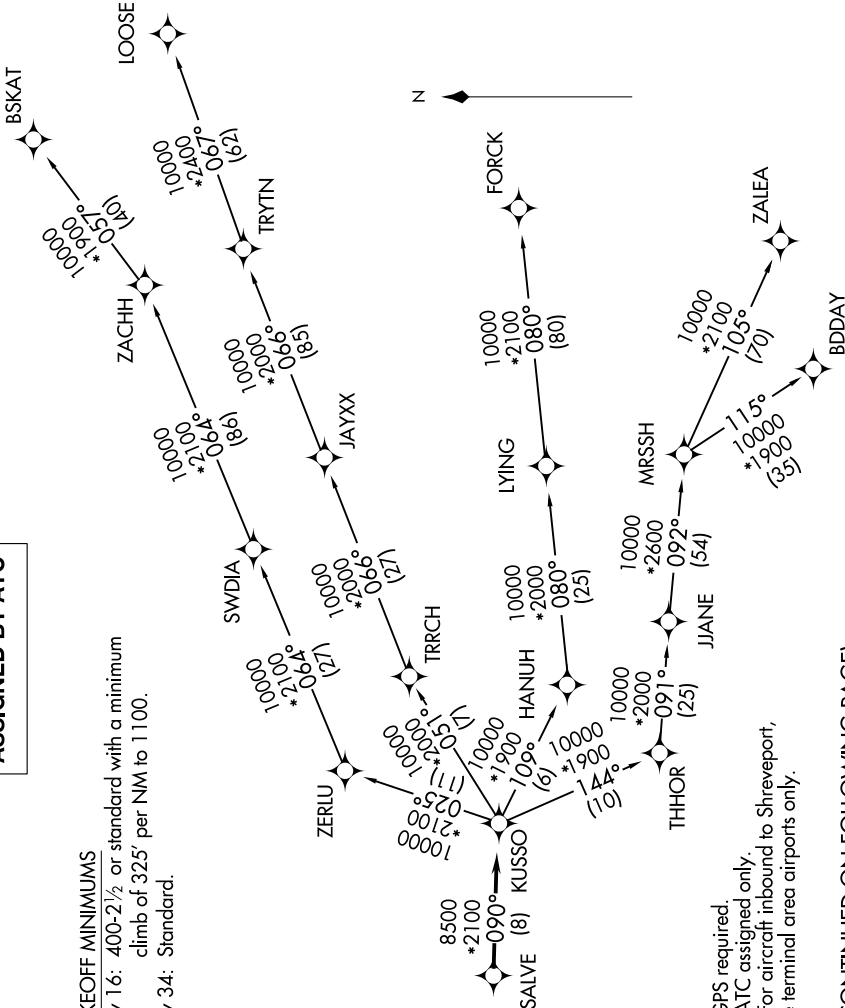
SC-2, 07 AUG 2025 to 04 SEP 2025

LONE STAR DEP CON
124.3 282.275
ATIS
133.4
CLNC DEL
119.55
GND CON
121.6
ADDISON TOWER ★
126.0 (CTAF) 239.0

TOP ALTITUDE:
ASSIGNED BY ATC

TAKEOFF MINIMUMS

Rwy 16: 400-2½ or standard with a minimum
climb of 325' per NM to 1100.
Rwy 34: Standard.



NOTE: Chart not to scale.

(CONTINUED ON FOLLOWING PAGE)

SC-2, 07 AUG 2025 to 04 SEP 2025