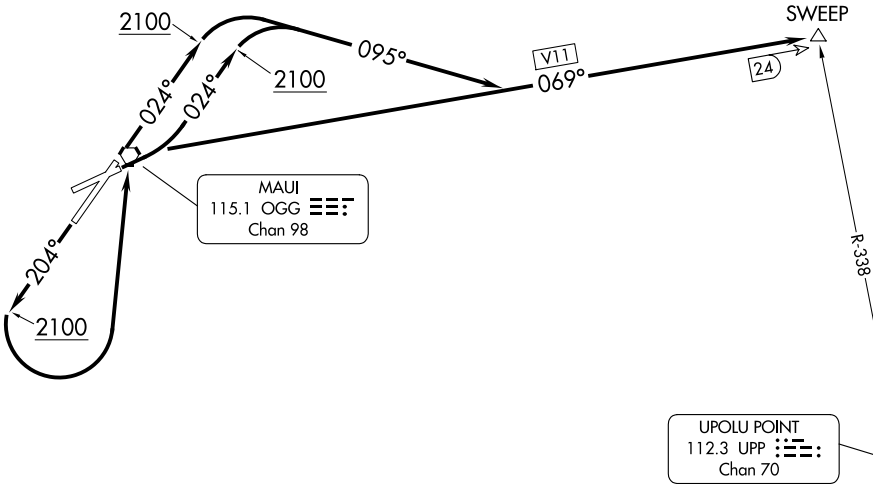


MAUI DEP CON  
NORTH 120.2 322.4  
SOUTH 119.5 225.4  
HCF APPROACH  
NORTH 120.2 322.4  
SOUTH 119.5 225.4  
ATIS  
128.6  
CLNC DEL  
120.6 290.5  
GND CON  
121.9 279.6  
MAUI TOWER ★  
118.7 (CTAF) 279.6

TOP ALTITUDE:  
6000



TAKEOFF MINIMUMS

Rwy 23: NA Obstacle and ATC.

Rwys 2, 5: Standard with ATC climb of 480' per NM to 2100.

Rwy 20: Standard with minimum climb of 480' per NM to 2100.

NOTE: Chart not to scale.



DEPARTURE ROUTE DESCRIPTION

TAKEOFF RUNWAY 2: Climb heading 024° to 2100 then climbing right turn to 6000 via heading 095° to intercept OGG VORTAC R-069 (V11) to SWEEP INT/OGG 24 DME.  
TAKEOFF RUNWAY 5: Climb heading 024° to 2100 then right turn to 6000 via heading 095° to intercept OGG VORTAC R-069 (V11) to SWEEP INT/OGG 24 DME.  
TAKEOFF RUNWAY 20: Climb heading 204° to 2100 then climbing left turn to 6000 direct OGG VORTAC then via OGG R-069 (V11) to SWEEP INT/OGG 24 DME.