

APP CRS <b>024°</b>	Rwy Idg TDZE Apt Elev	<b>6995</b> <b>55</b> <b>55</b>
------------------------	-----------------------------	---------------------------------------

# RNAV (RNP) Z RWY 2

RNP AR APCH - GPS.

**T** For uncompensated Baro-VNAV systems, procedure NA below 14°C or above 54° C. When local altimeter setting not received, procedure NA. For inop ALS, increase RNP 0.30 all Cats visibility to  $\frac{7}{8}$  SM.

MALSRL



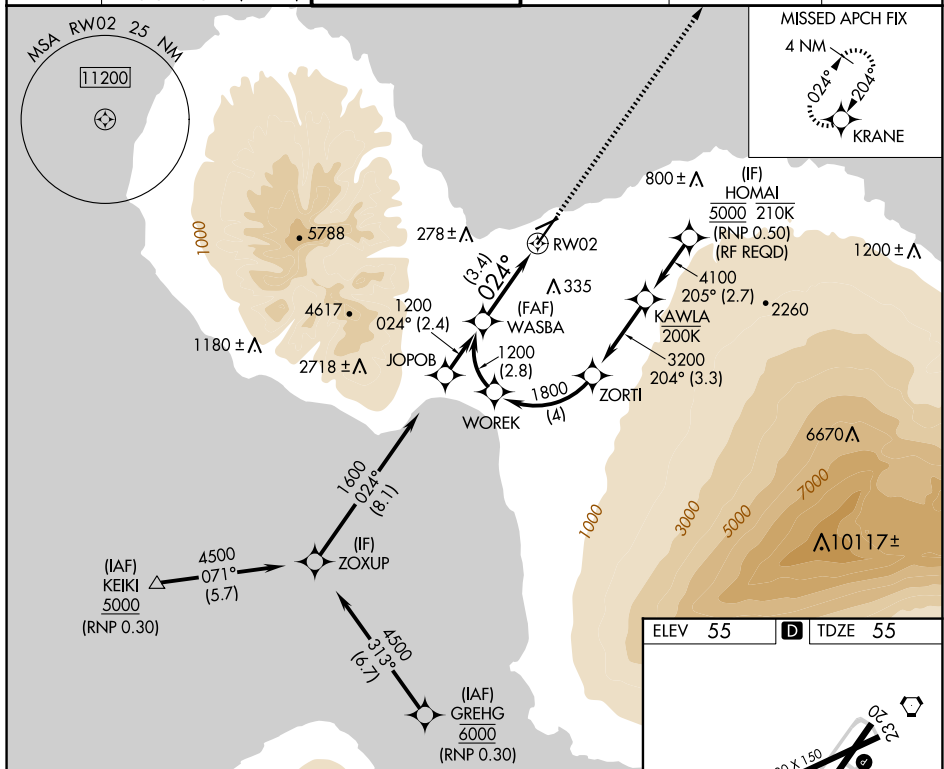
**MISSED APPROACH:** Climb to 3000  
direct KRANE and hold.

ATIS <b>128.6</b>	HCF APPROACH <b>120.2 322.4</b> (NORTH) <b>119.5 225.4</b> (SOUTH)
----------------------	--

MAUI TOWER ★  
118.7 (CTAF) **L** 279.6

	GND CON	
121.9	279.6	

CLNC DEL  
**120.6 290.5**

UNICOM  
122.95

WASBA

1200

1200

GP 3.00°  
TCH 62

024°

3.4 NM

RW02

VGS1 and RNAV glidepath not coincident  
(VGS1 Angle 3.00/TCH 77).

3000

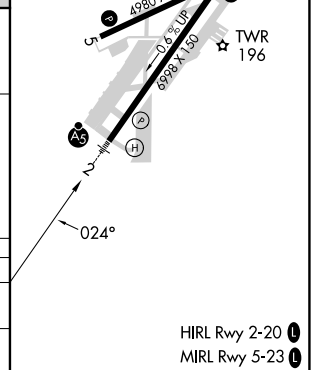
↑

✱

See planview for multiple IF locations.

CATEGORY	A	B	C	D
RNP 0.30 DA	394-½ 339 (400-½)			

**AUTHORIZATION REQUIRED**



RNAV (RNP) Z RWY 2