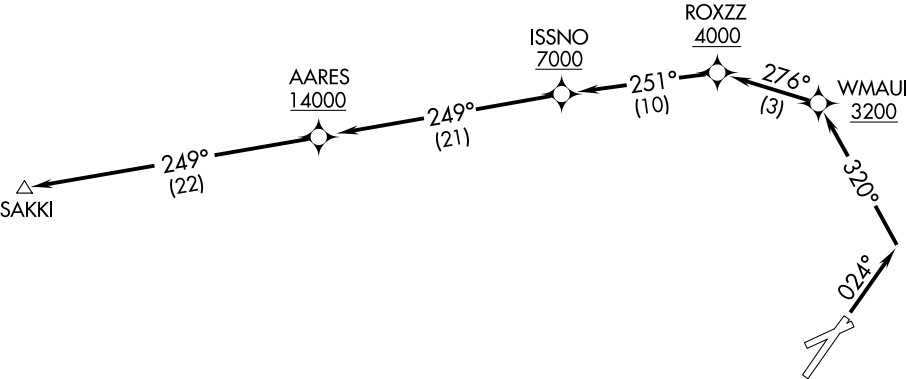


ATIS 128.6  
CLNC DEL  
120.6 290.5  
GND CON  
121.9 279.6  
MAUI TOWER ★  
118.7 (CTAF) 279.6  
HCF APPROACH  
NORTH 120.2 322.4  
SOUTH 119.5 225.4

TOP ALTITUDE:  
ASSIGNED BY ATC



NOTE: RNAV 1.  
NOTE: GPS required.

TAKEOFF MINIMUMS  
Rwys 5, 20, 23, NA - Air Traffic.  
Rwy 2: Standard with minimum climb of 355' per NM to 11200.

NOTE: Chart not to scale.



DEPARTURE ROUTE DESCRIPTION

TAKEOFF RUNWAY 2: Climb to assigned altitude on heading 024° to intercept course 320° to cross WMAUI at or above 3200, and on track 276° to cross ROXZZ at or above 4000, and on track 251° to cross ISSNO at or above 7000, and on track 249° to cross AARES at or above 14000, and on track 249° to SAKKI.