

LOC/DME I-OGG
110.1
Chan **38**

APP CRS
024°

Rwy Idg **6995**
TDZE **55**
Apt Elev **55**

ILS Z or LOC Z RWY 2
KAHULUI (OGG)(PHOG)

RNP APCH-GPS. From HOMAI or KEIKI or GREHG.

DME required.

MALSR

MISSED APPROACH: Climb to 3000 on OGG VORTAC R-023 to KRANE/OGG 13 DME and hold.

For inop ALS, increase S-ILS 2 Cat E visibility to ¾ SM, and S-LOC 2 Cats C/D/E visibility to 1½ SM.

ATIS
128.6

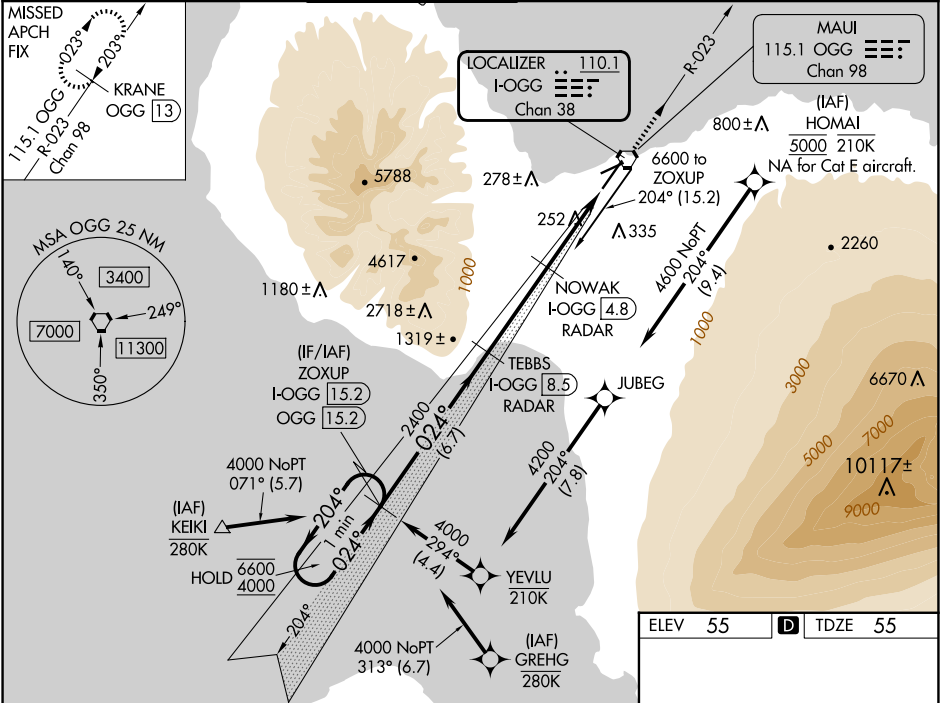
HCF APPROACH
120.2 322.4 (NORTH)
119.5 225.4 (SOUTH)

MAUI TOWER★
118.7 (CTAF) **0 279.6**

GND CON
121.9 279.6

CLNC DEL
120.6 290.5

UNICOM
122.95



Use I-OGG DME when on the localizer course. VGSI and ILS glidepath not coincident (VGSI Angle 3.00/TCH 77).

3000
OGG R-023

KRANE
OGG 13

One Minute Holding Pattern

GS 3.00° TCH 62

6600 ← 204°
4000 → 024°

2400

1220

6.7 NM

3.7 NM

2.3 NM

1.2

CATEGORY

A

B

C

D

E

S-ILS 2

275-½

220 (300-½)

S-LOC 2

520-½

465 (500-½)

520-1

465 (500-1)

CIRCLING

520-1
465 (500-1)

620-1
565 (600-1)

740-2
685 (700-2)

1140-3
1085 (1100-3)

1720-3
1665 (1700-3)

HIRL Rwy 2-20

MIRL Rwy 5-23