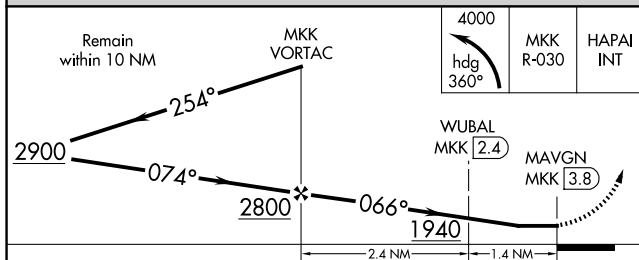
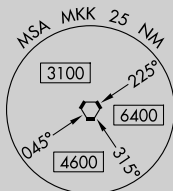
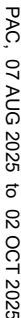


## VOR or TACAN-A

Circling Rwy 17, 23 NA at night.

**MISSED APPROACH:** Climbing left turn to 4000 on heading 360° and on MKK VORTAC R-030 to HAPAI INT/MKK 10 DME and hold, continue climb-in-hold to 4000.

GND CON  
121.9



CATEGORY	A	B	C	D
<b>C</b> CIRCLING	1940-1¼ 1486 (1500-1¼)	1940-1½ 1486 (1500-1½)	1940-3	1486 (1500-3)
WUBAL FIX MINIMUMS (DME REQUIRED)				
<b>C</b> CIRCLING	1400-1¼	946 (1000-1¼)	1680-3 1226 (1300-3)	1940-3 1486 (1500-3)

