

## KALAE ONE DEPARTURE (RNAV)

AL-759 (FAA)

MOLOKAI (MKK) (PHMK)  
KAUNAKAKAI, HAWAII

ATIS	128.2
GND CON	121.9
MOLOKAI TOWER ★	125.7 306.2
HCF CENTER	124.1 317.5

**TOP ALTITUDE:**  
**5000**

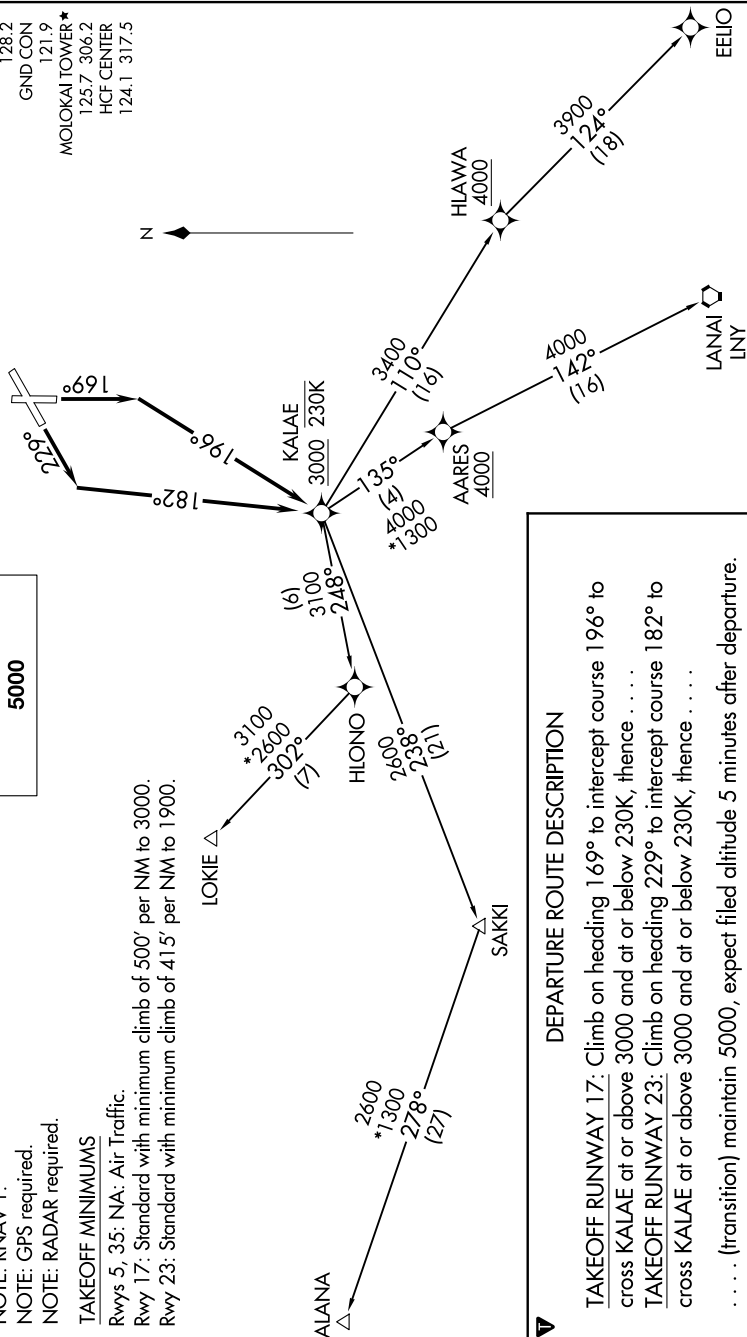
NOTE: RNAV 1.  
NOTE: GPS required.  
NOTE: RADAR required.

## TAKEOFF MINIMUMS

Rwys 5, 35: NA: Air Traffic.

Rwy 17: Standard with minimum climb of 500' per NM to 3000.

Rwy 23: Standard with minimum climb of 415' per NM to 1900.



NOTE: Chart not to scale.

## DEPARTURE ROUTE DESCRIPTION

TAKEOFF RUNWAY 17: Climb on heading 169° to intercept course 196° to cross KALAE at or above 3000 and at or below 230K, thence ...

### TAKEOFF RUNWAY 23: Climb on heading 229° to intercept course

cross KALAE at or above 3000 and at or below 230K, thence . . . .

... (transition) maintain 5000, expect filed altitude 5 minutes after departure.

## ALANA TRANSITION (KALAEI .ALANA)

# EELIO TRANSITION (KALAE1.EELIO)

LANAI TRANSITION (KALAE1.LNY)

## LOKIE TRANSITION (KALAE1 !LOKIE)

## KALAE ONE DEPARTURE (RNAV)

(KALAE1.KALAE) 25FEB21

KAUNAKAKAI, HAWAII

MOLOKAI (MKK) (PHMK)

PAC, 07 AUG 2025 to 02 OCT 2025