

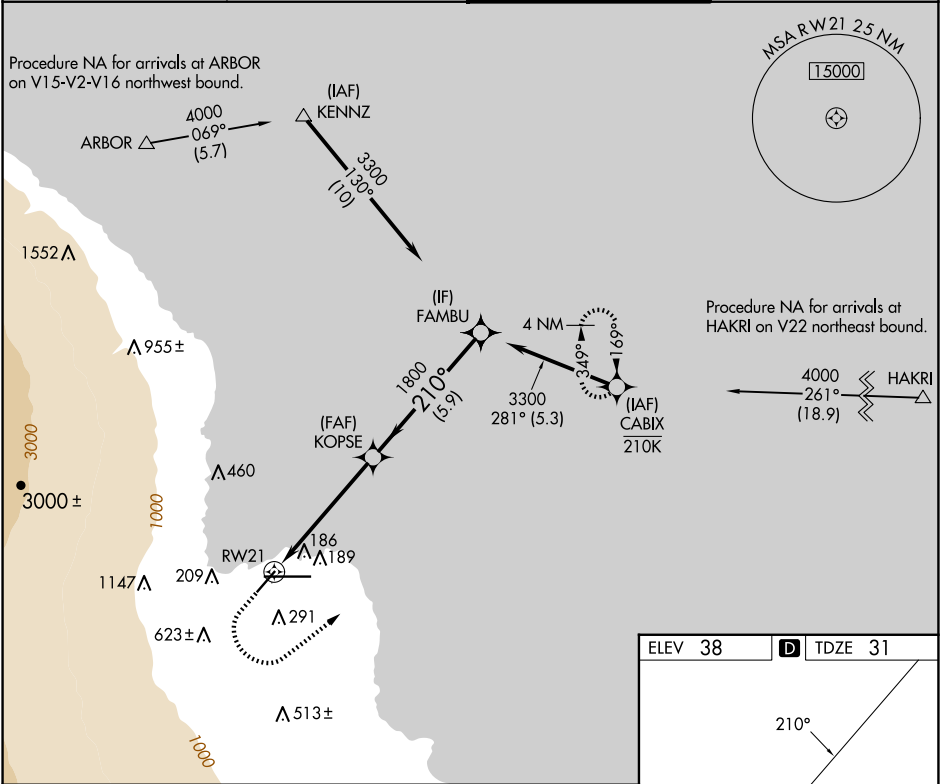
APP CRS	Rwy Idg	5510
210°	TDZE	31
	Apt Elev	38

RNAV (GPS) RWY 21

HILO INTL (ITO)(PHTO)

RNP APCH.	MISSED APPROACH: Climb to 500, then climbing left turn to 4000 direct CABIX and hold, continue climb-in-hold to 4000.
<div><div>▼</div><div>▲</div></div> Circling NA south of Rwy 8-26. Rwy 21 helicopter visibility reduction below ¾ SM NA.	

ATIS 126.4	HILO APP CON ★ 119.7 269.2	HILO TOWER ★ 118.1(CTAF) 0 263.1	GND CON 121.9
---------------	-------------------------------	-------------------------------------	------------------



500

4000

CABIX

↑

↶

✦

1.1 NM to RW21

1.1

4.3 NM

5.9 NM

3300

1800

210°

3.00°

TCH 50

KOPSE

FAMBU

CATEGORY	A	B	C	D
LNAV MDA	440-1	409 (500-1)	440-1 1/8	409 (500-1 1/8)
CIRCLING	500-1 462 (500-1)	540-1 502 (600-1)	840-2 1/4 802 (900-2 1/4)	1320-3 1282 (1300-3)

ELEV 38

TDZE 31

210°

9800 X 150

26

5000 X 150

TWR 164

REIL Rwy 3

MIRL Rwy 3-21

HIRL Rwy 8-26

PAC, 07 AUG 2025 to 02 OCT 2025

PAC, 07 AUG 2025 to 02 OCT 2025