

APCH CRS <b>352°</b>	Rwy Idg TDZE Arpt Elev	<b>N/A</b> <b>N/A</b> <b>843</b>
-------------------------	------------------------------	--

[USA]

WHEELER AAF (PHH1)

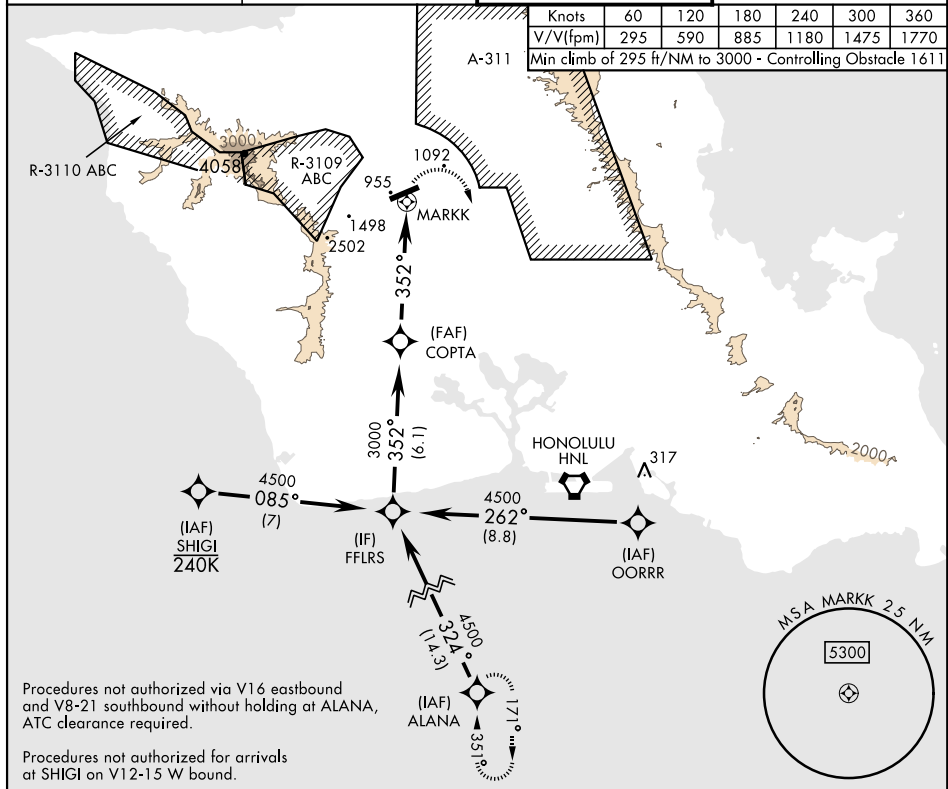
RNP APCH - GPS
DME required

**T** \*Circling to Rwy 24 not authorized at night.  
Circling not authorized N Rwy 6-24 when class D surface area is VFR.

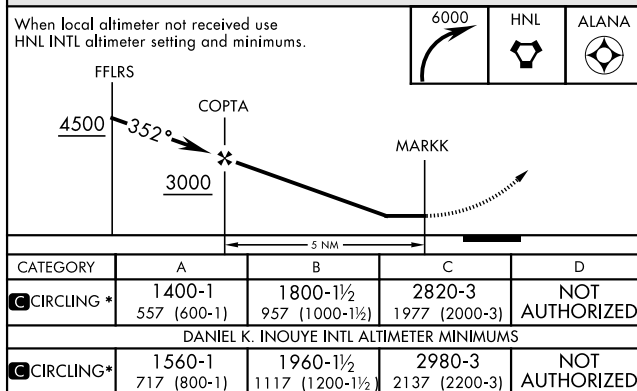
**MISSED APPROACH:** (Do not exceed 220 KIAS until initial turn completion.) Climbing right turn to 6000 direct HNL VORTAC, track 171° to ALANA and hold.

ATIS	HCF APP CON	TOWER ★	GND CON
119.675 242.4	118.3 269.0	126.3(CTAF) 235.625	41.5FM 121.85 237.5

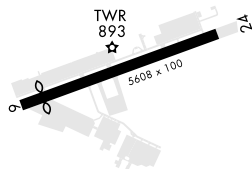
Knots	60	120	180	240	300	360
V/V(fpm)	295	590	885	1180	1475	1770
Min climb of 295 ft/NM to 3000 - Controlling Obstacle 1611						



When local altimeter not received use  
HNL INTL altimeter setting and minimums.



ELEV	843
Rwy 6 Idg	5038'



MIRL Rwy 6-24