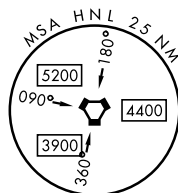
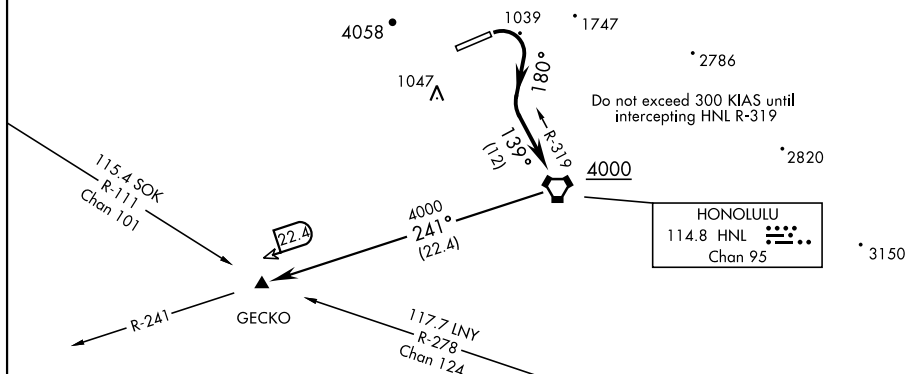


DME required	Rwy	Knots	60	120	180	240	300	360
	*06 @	V/V(fpm)	365	730	1095	1460	1825	2190
	†06 @	V/V(fpm)	252	504	756	1008	1260	1512

☐ (a) to 3600
☐ (b) to HNL to 4000



TAKEOFF RWY 6: Climbing right turn via heading 180° and HNL VORTAC R-319 to cross HNL at or above 4000, thence...

GECKO TRANSITION: ...via HNL R-241 to GECKO (HNL R-241/22.4 DME).