

SHLAE ONE ARRIVAL (RNAV)

AL-754 (FAA)

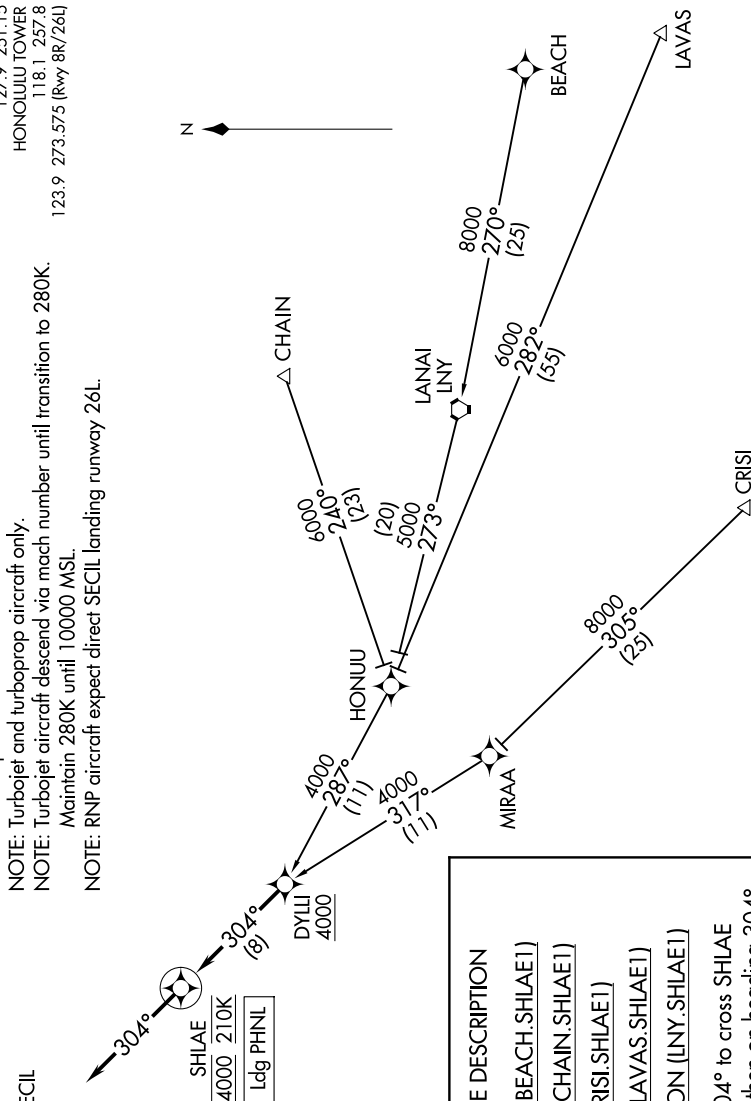
DANIEL K INOUE INTL (HNL) (PHNL)
HONOLULU, HAWAII

HONOLULU, HAWAII

HCF CENTER
ERISI, HONUU, MIRAA, DYLLI
118.45 278.3 (JAVAS)
D-ATIS
127.9 251.15
HONOLULU TOWER
118.1 257.8
123.9 273.575 (Rwy 8R/26L)

119.3 307.1 (CHAIN, BE)
NOTE: RADAR required.
NOTE: RNAV 1.
NOTE: GPS required.
NOTE: Turbojet and turboprop aircraft only.
NOTE: Turbojet aircraft descend via mach number until transition to 280K.
Maintain 280K until 10000 MSL.
NOTE: RNP aircraft expect direct SECIL landing runway 26L

NOTE: Chart not to scale.



ARRIVAL ROUTE	DESCRIPTION
BEACH	TRANSITION (BEACH.SHLAE1)
CHAIN	TRANSITION (CHAIN.SHLAE1)
CRISI	TRANSITION (CRISI.SHLAE1)
LAVAS	TRANSITION (LAVAS.SHLAE1)
LANAI CITY	TRANSITION (LNY.SHLAE1)

From DYLLI on track 304° to cross SHLAE
at 4000 and at 210K, then on heading 304°
or as assigned by ATC. Expect RADAR vectors
to final approach course.

SHLAE ONE ARRIVAL (RNAV)

(DYLLI.SHLAE1) 30JAN20

HONOLULU, HAWAII

DANIEL K INOUE INTL (HNL) (PHNL)

PAC, 07 AUG 2025 to 02 OCT 2025

PAC, 07 AUG 2025 to 02 OCT 2025