

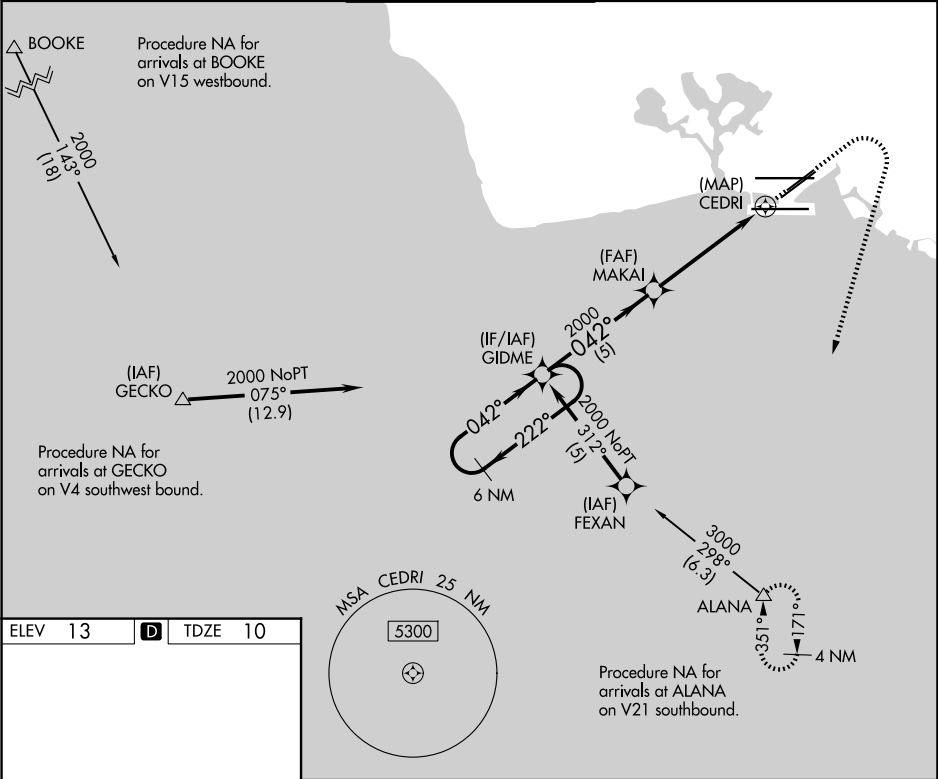
APP CRS	Rwy Ldg	6955
042°	TDZE	10
	Apt Elev	13

RNAV (GPS) RWY 4L

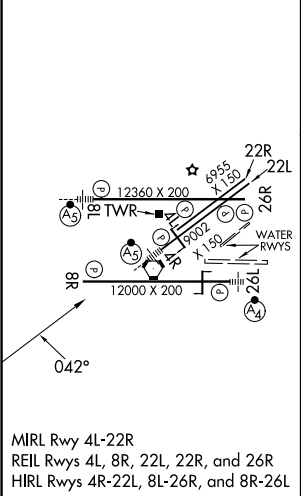
DANIEL K INOUEY INTL (HNL) (PHNL)

RNP APCH	<div><div><div>▼</div><div>▲</div></div><div>Circling Rwy 22R NA at night. Circling NA for Cats A and B northwest of Rwys 8L and 22R. Circling NA for Cats C, D, and E north of Rwy 8L-26R. Circling NA to Sea Lanes 4W, 8W, 22W, and 26W. Rwy 4L helicopter visibility reduction below $\frac{3}{4}$ SM NA.</div></div>	MISSED APPROACH: Climb to 500 then climbing right turn to 3000 direct ALANA and hold.
----------	---	---

D-ATIS	HCF APPROACH	HONOLULU TOWER	GND CON	CLNC DEL
127.9 251.15	118.3 269.0	118.1 257.8 123.9 273.575 (8R/26L)	121.9 348.6	121.4 281.4



ELEV 13	D	TDZE 10
---------	----------	---------



6 NM Holding Pattern		GIDME	MAKAI	500	3000	ALANA
		2000 ← 222°	042° → 2000	3.04° TCH 50		
		5 NM		1 NM		
CATEGORY	A	B	C	D	E	
LNAV MDA	460-1 $\frac{1}{4}$	450 (500-1 $\frac{1}{4}$)	460-1 $\frac{3}{8}$ 450 (500-1 $\frac{3}{8}$)	460-1 $\frac{1}{2}$ 450 (500-1 $\frac{1}{2}$)	980-3 970 (1000-3)	
CIRCLING	680-1 $\frac{1}{4}$	667 (700-1 $\frac{1}{4}$)	820-2 $\frac{1}{4}$ 807 (900-2 $\frac{1}{4}$)	1400-3 1387 (1400-3)	1940-3 1927 (2000-3)	

PAC, 07 AUG 2025 to 02 OCT 2025

PAC, 07 AUG 2025 to 02 OCT 2025