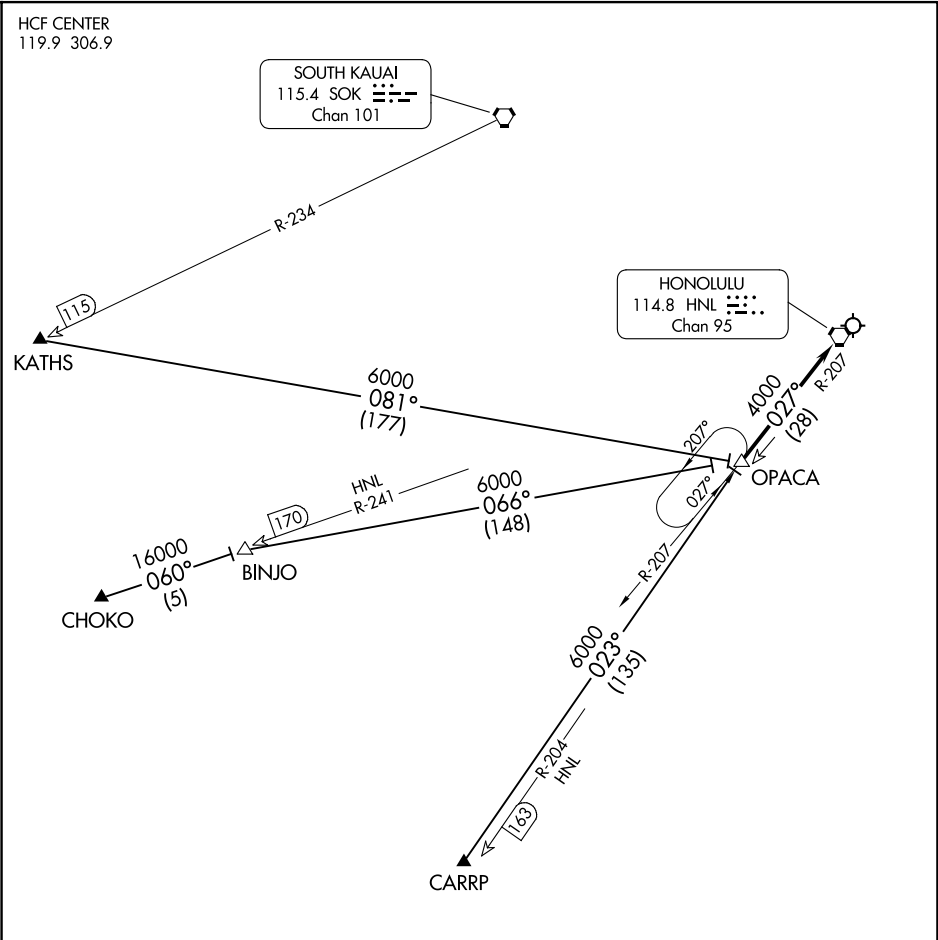


PAC, 07 AUG 2025 to 02 OCT 2025

PAC, 07 AUG 2025 to 02 OCT 2025



NOTE: RNAV equipped aircraft only.
NOTE: Chart not to scale.

ARRIVAL ROUTE DESCRIPTION

CARRP TRANSITION (CARRP.OPACA4): From over CARRP WP, RNAV direct to OPACA DME. Thence. . .
CHOKO TRANSITION (CHOKO.OPACA4): From over CHOKO WP, RNAV direct to BINJO DME, then direct to OPACA DME. Thence. . .
KATHS TRANSITION (KATHS.OPACA4): From over KATHS WP, RNAV direct to OPACA DME. Thence. . .
. . . From over OPACA DME via HNL R-207 to HNL VORTAC, expect RADAR vectors to final approach course.