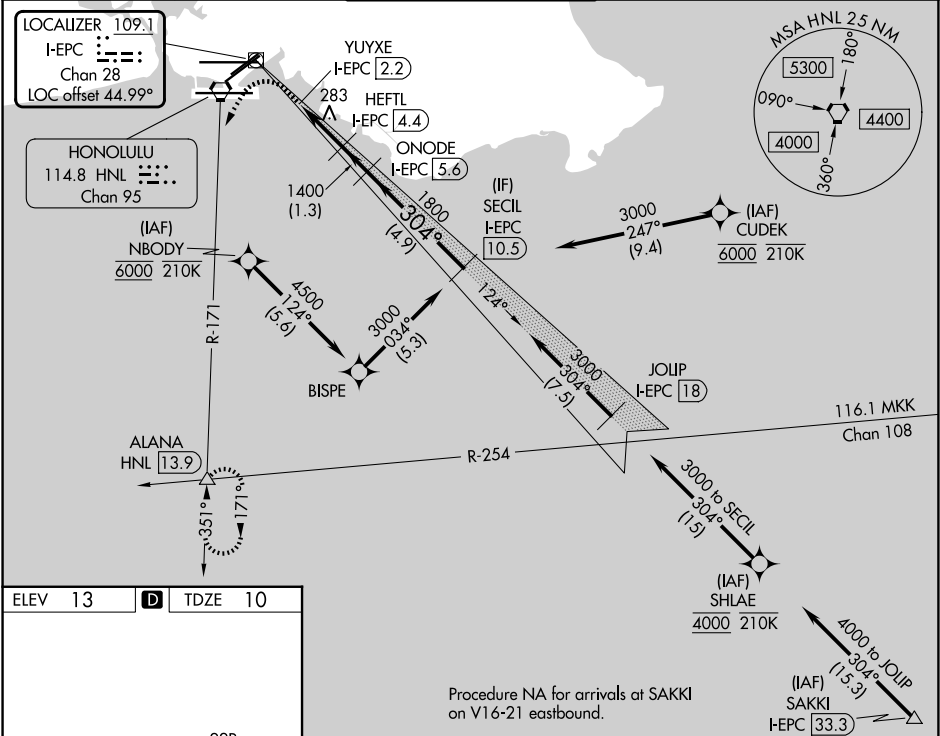


LOC/DME I-EPC	APP CRS	Rwy Ldg
109.1	304°	11830
Chan 28		TDZE 10
		Apt Elev 13

LDA RWY 26L

DANIEL K INOUE INTL (HNL) (PHNL)

DME required. From CUDEK, NBODY, SHLAE: RNAV 1-GPS required.			MALSF	MISSED APPROACH: Climb to 600 then climbing left turn to 3000 on HNL VORTAC R-171 to ALANA INT/ HNL 13.9 DME and hold.
<div><div>▼</div><div>NA</div></div> <div>Circling Rwy 22R NA at night. Circling NA to sea lanes 4W, 8W, 22W and 26W. NBODY transition, CUDEK transition, SHLAE transition NA for Cat E aircraft. Follow flasher lights to Rwy 26L. Procedure NA when ALS or SFL inop. Circling Cat E NA. Circling NA for Cats A and B northwest of Rwy 8L-22R. Circling NA for Cats C and D north of Rwy 8L-26R.</div>				
D-ATIS	HCF APPROACH	HONOLULU TOWER	GND CON	CLNC DEL
127.9 251.15	118.3 269.0	118.1 257.8 123.9 273.575 (8R/26L)	121.9 348.6	121.4 281.4



ELEV 13	D	TDZE 10
<div><div><div>12360 X 200</div><div>8555</div><div>8955</div><div>22R</div><div>22L</div><div>26R</div><div>26L</div><div>8R</div><div>12000 X 200</div><div>WATER RWYS</div><div>304°</div></div><div>MIRL Rwy 4L-22R REIL Rwys 4L, 8R, 22L, 22R, and 26R HIRL Rwys 4R-22L, 8L-26R, and 8R-26L</div></div>		

Procedure NA for arrivals at SAKKI on V16-21 eastbound.					
600 3000 ALANA VGSi and descent angles not coincident (VGSi Angle 3.00/TCH 75).					
Use I-EPC DME when on the localizer course.					
<div><div>HEFTL I-EPC 4.4</div><div>ONODE I-EPC 5.6</div><div>SECIL I-EPC 10.5</div><div>YUYXE I-EPC 2.2</div><div>3.10° TCH 60</div><div>2.2 NM</div><div>1.3 NM</div><div>4.9 NM</div></div>					
CATEGORY	A	B	C	D	E
S-LDA 26L	600-2 590 (600-2)				
CIRCLING	680-2¼ 667 (700-2¼)	760-2¼ 747 (800-2¼)	820-2¼ 807 (900-2¼)	1400-3 1387 (1400-3)	NA