

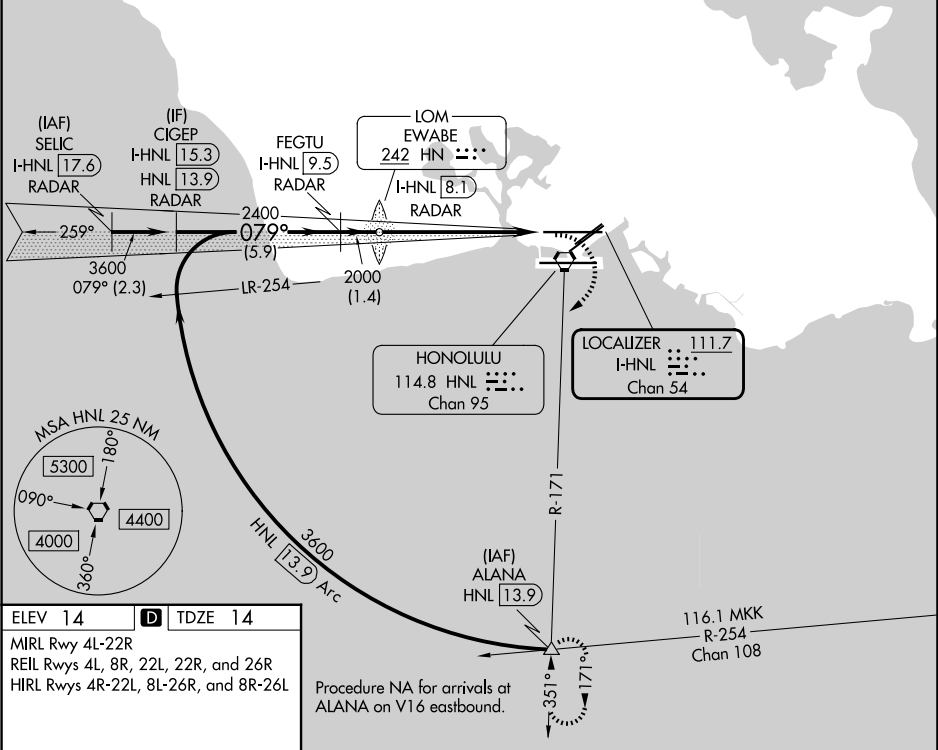
|                |             |                    |
|----------------|-------------|--------------------|
| LOC/DME I-HNL  | APP CRS     | Rwy Ldg            |
| <b>111.7</b>   | <b>079°</b> | <b>12245</b>       |
| Chan <b>54</b> |             | TDZE <b>14</b>     |
|                |             | Apt Elev <b>14</b> |

LOC RWY 8L

DANIEL K INOUE INTL (HNL) (PHNL)

|  |                                   |   |
|--|-----------------------------------|---|
| DME or RADAR required.   | MALSR                             | MISSED APPROACH: Climbing right turn to 5000 on heading 200° and HNL VORTAC R-171 to ALANA INT/HNL 13.9 DME and hold, continue climb-in-hold to 5000. |
| <div><div></div><div>Circling Rwy 22R NA at night. Circling NA for Cats A and B northwest of Rwys 8L and 22R and for Cats C and D north of Rwy 8L-26R. Circling NA to sea lanes 4W, 8W, 22W and 26W. For inop ALS, increase S-LOC 8L Cats C and D visibility to 1½ SM.</div></div> | <div><div></div><div></div></div> |   |

|                     |                    |                               |                    |                    |
|---------------------|--------------------|-------------------------------|--------------------|--------------------|
| D-ATIS              | HCF APPROACH       | HONOLULU TOWER                | GND CON            | CLNC DEL           |
| <b>127.9 251.15</b> | <b>118.3 269.0</b> | <b>118.1 257.8</b>            | <b>121.9 348.6</b> | <b>121.4 281.4</b> |
|                     |                    | <b>123.9 273.575</b> (8R/26L) |                    |                    |



ELEV 14 TDZE 14

MIRL Rwy 4L-22R  
REIL Rws 4L, 8R, 22L, 22R, and 26R  
HIRL Rws 4R-22L, 8L-26R, and 8R-26L

FAF to MAP 5.9 NM

|         |      |      |      |      |      |
|---------|------|------|------|------|------|
| Knots   | 60   | 90   | 120  | 150  | 180  |
| Min:Sec | 5:54 | 3:56 | 2:57 | 2:22 | 1:58 |

|                        |       |  |                        |   |           |       |
|------------------------|-------|--|------------------------|---|-----------|-------|
| CIGEP I-HNL 15.3 RADAR |       | VGSi and descent angles not coincident (VGSi Angle 3.00/TCH 73). |                        | 5000 hdg 200°                               | HNL R-171 | ALANA |
| FEGTU I-HNL 9.5 RADAR  |       | EWABE LOM I-HNL 8.1 RADAR  |                        | Use I-HNL DME when on the localizer course. |           |       |
| 3600                   |       | 2400   |                        | 2000  |           |       |
| 5.9 NM                 |       | 1.4 NM   |                        | 4.7 NM                                      |           |       |
| 1.2 NM                 |       |  |                        |   |           |       |
| CATEGORY               | A     | B  | C                      | D   |           |       |
| S-8L                   | 480-½ | 466 (500-½)  | 480-1                  | 466 (500-1)                                 |           |       |
| CIRCLING               | 680-1 | 666 (700-1)  | 820-2¼<br>806 (900-2¼) | 1280-3<br>1266 (1300-3)                     |           |       |