

LOC/DME I-HUM 110.5 Chan 42	APP CRS 042°	Rwy Ldg 8950 TDZE 8 Apt Elev 13	LOC RWY 4R DANIEL K INOUEY INTL (HNL) (PHNL)
---	------------------------	--	---

DME required.

▼

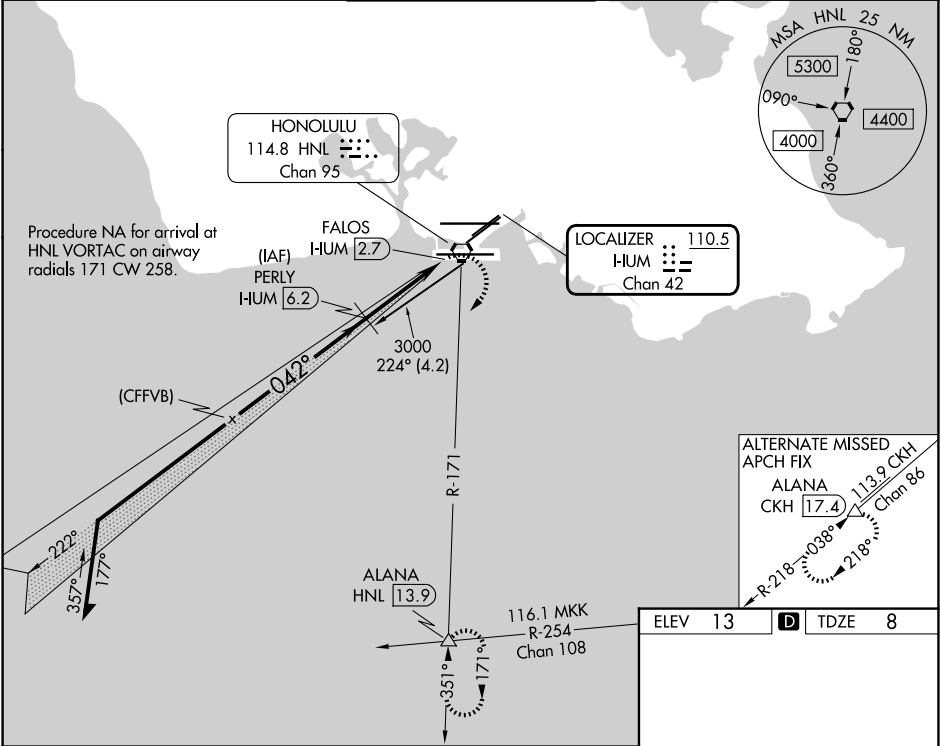
▲

Circling Rwy 22R NA at night. For inop ALS, increase Cat E visibility to 1½ SM. Circling NA for Cats A and B northwest of Rwys 8L and 22R. Circling NA for Cats C and D north of Rwy 8L-26R. Circling NA to sea lanes 4W, 8W, 22W, and 26W.

MALSR

MISSED APPROACH: Climbing right turn to 3000 on heading 220° and HNL VORTAC R-171 to ALANA INT/ HNL 13.9 DME and hold.

D-ATIS 127.9 251.15	HCF APPROACH 118.3 269.0	HONOLULU TOWER 118.1 257.8 123.9 273.575 (8R/26L)	GND CON 121.9 348.6	CLNC DEL 121.4 281.4
-------------------------------	------------------------------------	---	-------------------------------	--------------------------------



Remain within 15 NM

PERLY I-HUM 6.2

1900

222°

042°

1500

3.03° TCH 55

FALOS HUM 2.7

3000 hdg 220°

HNL R-171

ALANA

VGSI and descent angles not coincident (VGSI Angle 3.00/TCH 71°).

3.5 NM

1 NM

CATEGORY	A	B	C	D	E
S-4R	460-¾	452 (500-¾)	460-⅞	452 (500-⅞)	
CIRCLING	680-1¼ 667 (700-1¼)	760-1¼ 747 (800-1¼)	820-2¼ 807 (900-2¼)	1400-3 1387 (1400-3)	NA

MIRL Rwy 4L-22R

REIL Rwys 4L, 8R, 22L, 22R, and 26R

HIRL Rwys 4R-22L, 8L-26R, and 8R-26L