

## KEOLA THREE DEPARTURE

AL-754 (FAA)

DANIEL K INOUE INTL (HNL) (PHNL)  
HONOLULU, HAWAII

PAC, 07 AUG 2025 to 02 OCT 2025

NOTE: Chart not to scale.

## DEPARTURE ROUTE DESCRIPTION

Turn right/left to heading assigned by the Tower, expect vectors to KEOLA, maintain 5000; then on transition. Expect clearance to enroute altitude/flight level at KEOLA.

KATHS TRANSITION (KEOLA3.KATHS): From over KEOLA on HNL R-258 and SOK R-234 to KATHS.

LIHUE TRANSITION (KEOLA3.LIH): From over KEOLA on SOK R-111 and LIH R-148 to LIH VORTAC.

LILIA TRANSITION (KEOLA3.LILIA): From over KEOLA on track 282° to LILIA.

## NONNI TRANSITION (KEOLA3.NONNI): From over KEOLA on HNL R-258 to NONNI.

**PUPPI TRANSITION (KEOLA3.PUPPI):** From over KEOLA on track 271° to PUPPI.

SOUTH KAUAI TRANSITION (KEOLA3.SOK): From over KEOLA on SOK R-111 to SOK VORTAC.

## TAKEOFF MINIMUMS

Rwys 26L/R: Standard.

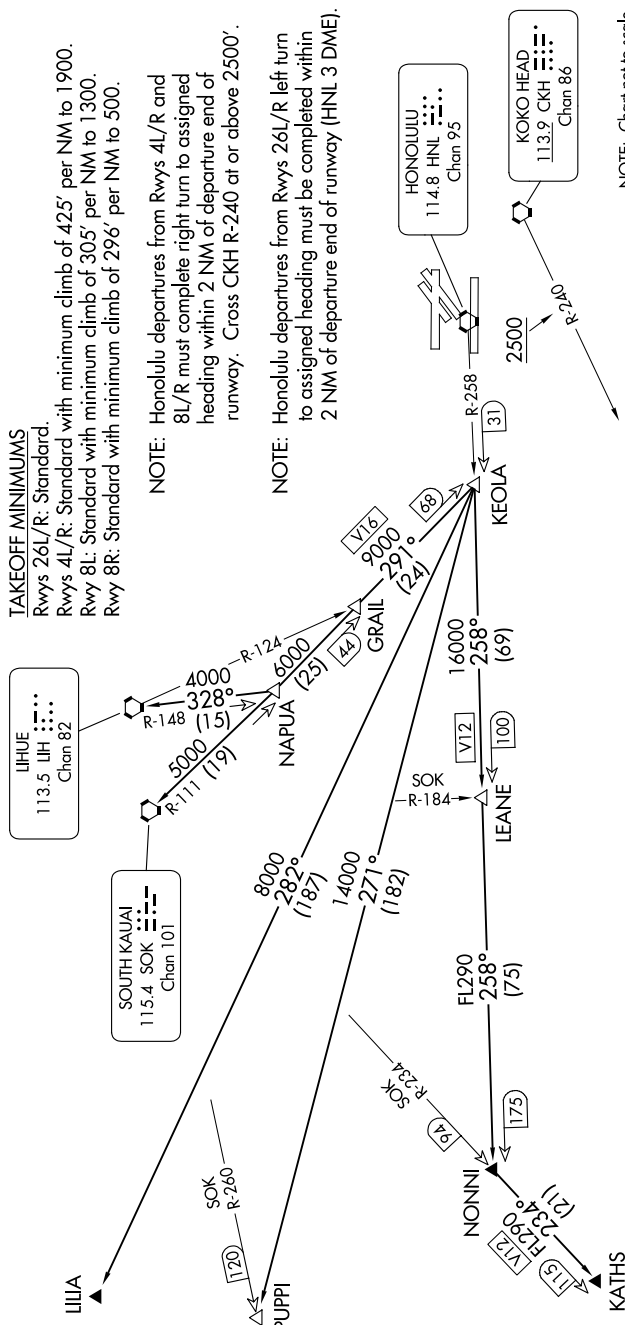
Rwys 4L/R: Standard with minimum climb of 425' per NM to 1900.

Rwy 8L: Standard with minimum climb of 305' per NM to 1300.

Rwy 8R: Standard with minimum climb of 296' per NM to 500.

**NOTE:** Honolulu departures from Rwy's 4L/R and 8L/R must complete right turn to assigned heading within 2 NM of departure end of runway. Cross CKH R-240 at or above 2,000 feet.

NOTE: Honolulu departures from Rwy 26L/R left turn to assigned heading must be completed within 2 NM of departure end of runway (HNL 3 DME).



## KEOLA THREE DEPARTURE