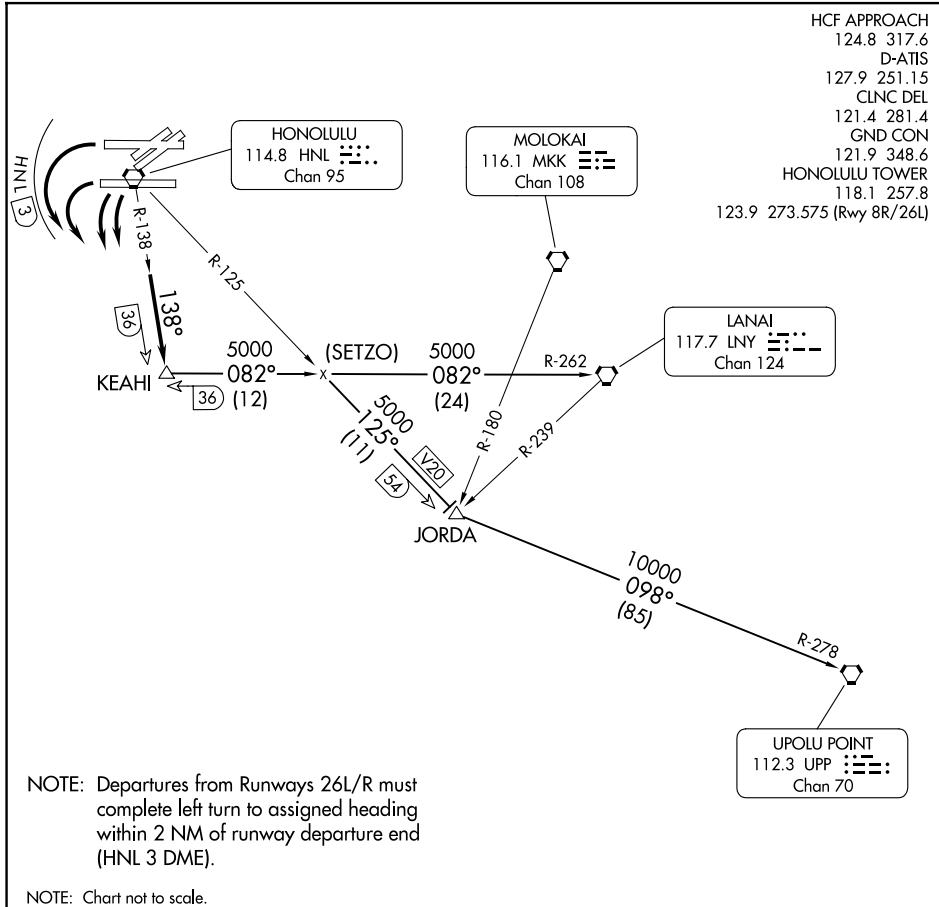


KEAHI THREE DEPARTURE

AL-754 (FAA)

HONOLULU, HAWAII



## DEPARTURE ROUTE DESCRIPTION

**TAKEOFF RUNWAYS 22/26 ONLY:** Turn left to heading assigned by tower, expect RADAR vectors to intercept HNL R-138; then via HNL R-138 to KEAHI INT, maintain 5000'; then via (transition). Expect clearance to enroute altitude/flight level at JORDA INT or LNY VORTAC.

JORDA TRANSITION (KEAHI3.JORDA): From over KEAHI INT via LNY R-262 and HNL R-125 to JORDA INT.

LANAI TRANSITION (KEAHI3.LNY): From over KEAHI INT via LNY R-262 to LNY VORTAC.

UPOLU TRANSITION (KEAHI3.UPP): From over KEAHI INT via LNY R-262 and HNL R-125 to JORDA INT, thence via UPP R-278 to UPP VORTAC.

KEAHI THREE DEPARTURE

(KEAHI3.KEAHI) 06JAN94

HONOLULU, HAWAII

DANIEL K INOUE INTL (HNL) (PHNL)

PAC, 07 AUG 2025 to 02 OCT 2025