

APP CRS  
**053°**

Rwy Idg  
TDZE  
Apt Elev

**4600**  
**624**  
**626**

**RNAV (GPS) RWY 5**  
LAKE COUNTY EXEC (LNN)

RNP APCH - GPS.

▼

▲

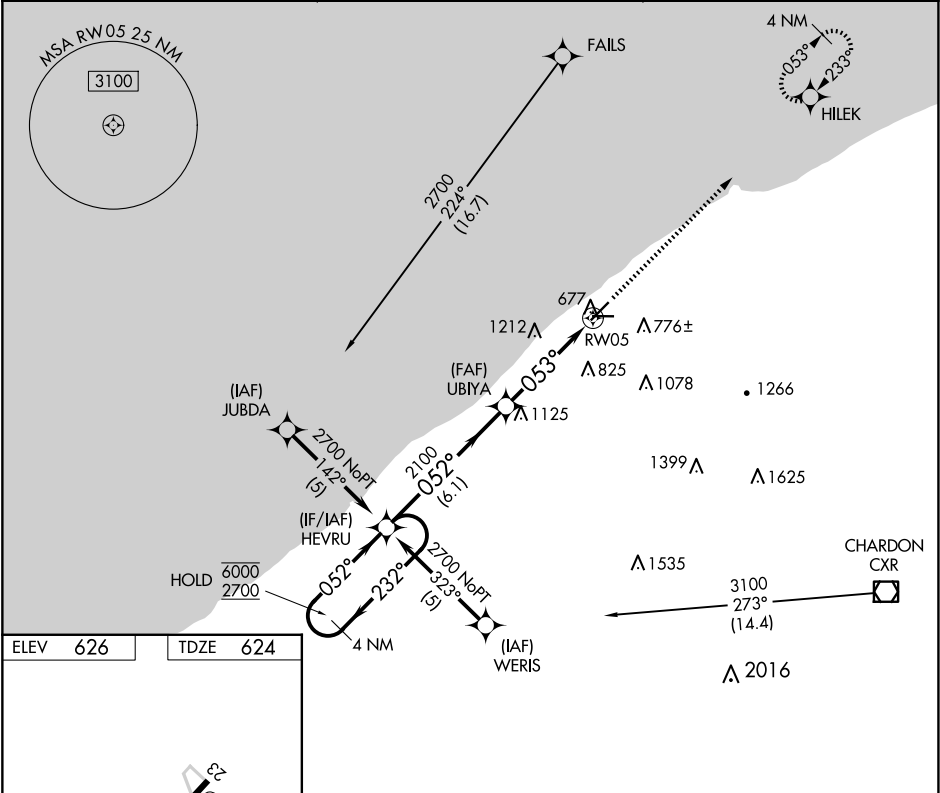
Rwy 5 helicopter visibility reduction below ¾ SM NA.

MISSED APPROACH: Climb to 2300 direct HILEK and hold.

AWOS-3PT  
**119.225**

CLEVELAND APP CON  
**125.35 346.325**

UNICOM  
**122.725 (CTAF) 0**



ELEV 626 TDZE 624

REIL Rws 5, 10, 23 and 28 0  
MIRL Rws 5-23 and 10-28 0

4 NM Holding Pattern HEVRU

VGSI and descent angles not coincident (VGSI Angle 3.50/TCH 29).

2300 HILEK

CATEGORY	A	B	C	D
LNAV MDA	1460-1 836 (900-1)	1460-1¼ 836 (900-1¼)	1460-2½ 836 (900-2½)	NA
CIRCLING	1460-1¼	834 (900-1¼)	1520-2¾ 894 (900-2¾)	NA

EC-2, 07 AUG 2025 to 04 SEP 2025

EC-2, 07 AUG 2025 to 04 SEP 2025