

24025

# RNAV (GPS) RWY 28

## LAKE COUNTY EXEC (LNN)

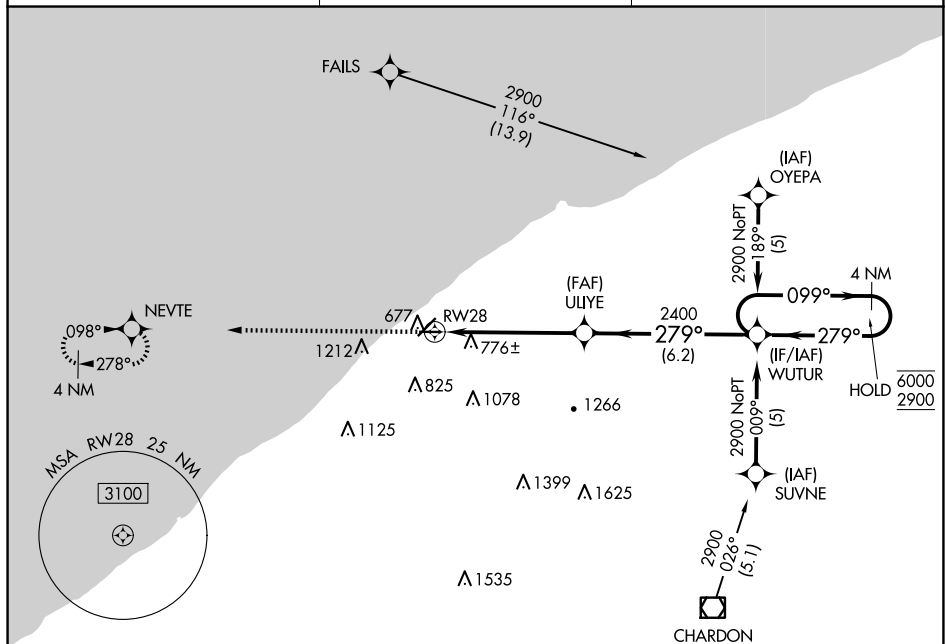
**MISSED APPROACH:** Climb to 2300 direct NEVTE and hold.

**T** Rwy 28 helicopter visibility reduction below  $\frac{3}{4}$  SM NA.

AWOS-3PT  
119.225

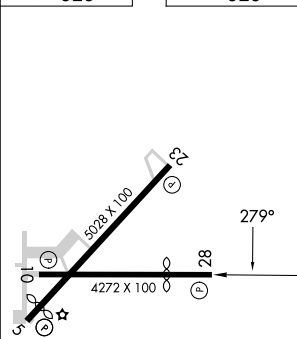
CLEVELAND APP CON  
125.35 346.325

UNICOM  
122.725 (CTAF) **L**

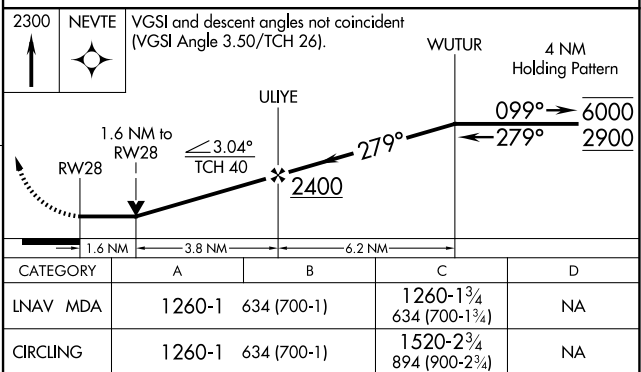


EC-2, 07 AUG 2025 to 04 SEP 2025

ELEV 626		TDZE 626
----------	--	----------



MIRL Rwy 5-23 and 10-28 **L**  
REIL Rwy 5, 10, 23, and 28 **L**



WILLOUGHBY, OHIO  
Orig-C 08SEP22

41°41'N-81°23'W

LAKE COUNTY EXEC (LNN)  
RNAV (GPS) RWY 28