

WAAS  
CH **82410**  
**W23A**

APP CRS  
**233°**

Rwy Idg **5028**  
TDZE **623**  
Apt Elev **626**

**RNAV (GPS) RWY 23**

LAKE COUNTY EXEC (LNN)

RNP APCH - GPS.

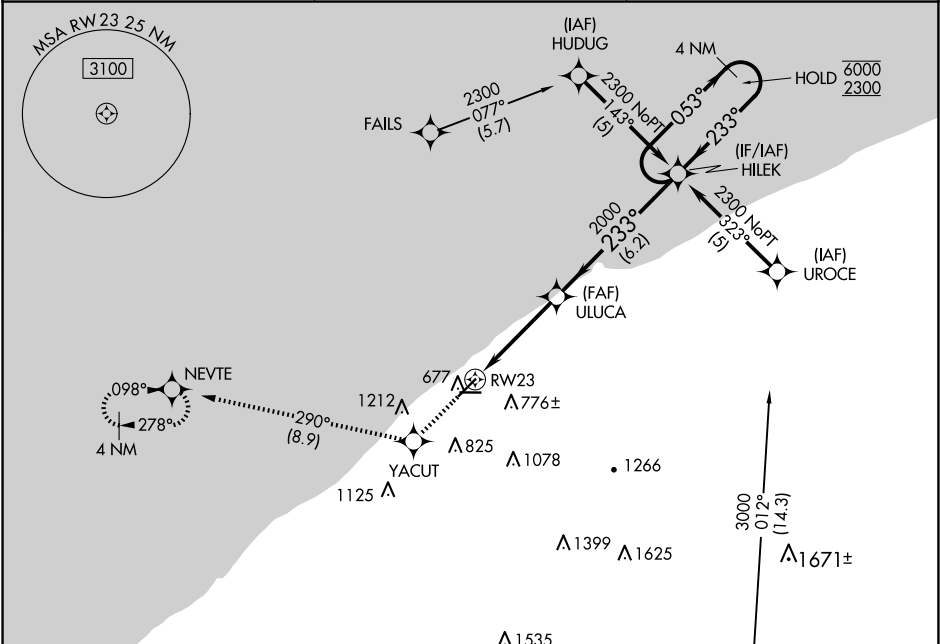
▼ Rwy 23 helicopter visibility reduction below ¾ SM NA. For uncompensated Baro-VNAV systems, LNAV/VNAV NA below -16°C or above 54°C.

MISSED APPROACH: Climb to 2300 direct YACUT and on track 290° to NEVTE and hold.

AWOS-3PT  
**119.225**

CLEVELAND APP CON  
**125.35 346.325**

UNICOM  
**122.725 (CTAF) 0**



ELEV 626

TDZE 623

233°

5028 X 100

4272 X 100

28

2300

YACUT

tr 290°

NEVTE

VGSI and RNAV glidepath not coincident (VGSI Angle 4.00/TCH 54).

4 NM Holding Pattern

053°

6000

2300

GP 3.00°

TCH 40

\*LNAV only.

\*1.2 NM to RW23

ULUCA

2000

233°

2000

1.2 NM

3 NM

6.2 NM

CATEGORY	A	B	C	D
LPV DA	1031-1½ 408 (500-1½)			NA
LNAV/VNAV DA	1142-1¾ 519 (600-1¾)			NA
LNAV MDA	1200-1	577 (600-1)	1200-1½ 577 (600-1½)	NA
CIRCLING	1200-1	574 (600-1)	1520-2¾ 894 (900-2¾)	NA

REIL Rwy 5, 10, 23 and 28 0

MIRL Rwy 5-23 and 10-28 0