

APP CRS
098°

Rwy Idg
TDZE
Apt Elev
4272
625
626

RNAV (GPS) RWY 10
LAKE COUNTY EXEC (LNN)

RNP APCH.

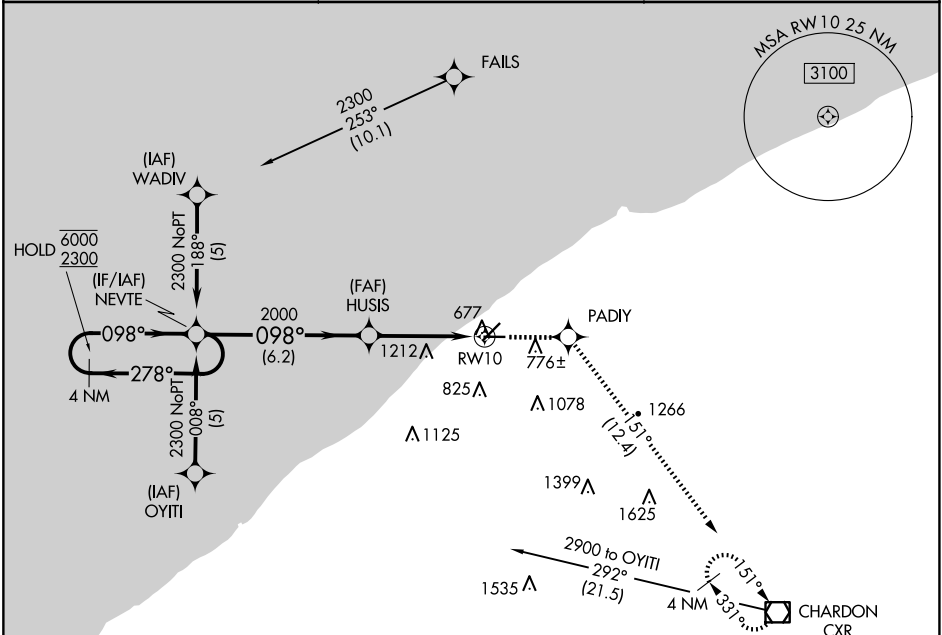
▼

▲

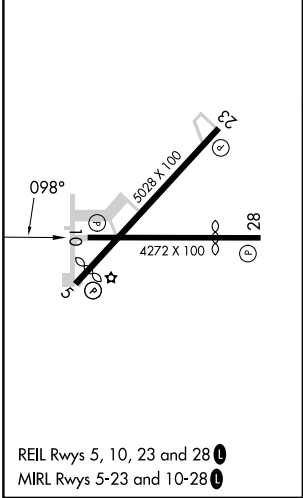
Rwy 10 helicopter visibility reduction below ¾ SM NA.

MISSED APPROACH: Climb to 2900 direct PADIY and on track 151° to CXR VOR/DME and hold.

AWOS-3PT 119.225	CLEVELAND APP CON 125.35 346.325	UNICOM 122.725 (CTAF) 0
----------------------------	--	-----------------------------------



ELEV 626	TDZE 625
----------	----------



REIL Rws 5, 10, 23 and 28 0
MIRL Rws 5-23 and 10-28 0

VGSIs and descent angles not coincident (VGSIs Angle 3.50/TCH 47).				2900	PADIY	tr 151°	CXR
4 NM Holding Pattern				HUSIS	2.4 NM to RWY 10		
6000 ← 278° → 098° → 2000				3.03° TCH 40			
				6.2 NM	1.8 NM	2.4 NM	
CATEGORY	A	B	C	D			
LNAV MDA	1560-1¼	935 (1000-1¼)	1560-2¾ 935 (1000-2¾)	NA			
CIRCLING	1560-1¼	934 (1000-1¼)	1560-2¾ 934 (1000-2¾)	NA			