

WAAS CH 78019 W22A	APP CRS 221°	Rwy Idg TDZE Apt Elev	5001 270 288
--	------------------------	-----------------------------	---

RNAV (GPS) RWY 22
AUBURN/LEWISTON MUNI (LEW)

RNP APCH.

T Procedure NA at night. For uncompensated Baro-VNAV systems, LNAV/VNAV NA below -15°C or above 48°C. Rwy 22 helicopter visibility reduction below 1 SM NA. When local altimeter setting not received, use Augusta altimeter setting: increase LPV all Cats DA to 617 feet and all Cats visibility ½ SM; LNAV/VNAV all Cats DA to 938 feet and all Cats visibility ½ SM; increase all MDA 80 feet and LNAV Cat C/D visibility ¾ SM. Baro-VNAV NA when using Augusta altimeter setting.

MISSED APPROACH: Climb to 3100 direct AUBIN and hold.

AWOS-3PT 118.025	PORTLAND APP CON ★ 125.5 353.9	CLNC DEL 124.05	UNICOM 122.8 (CTAF) 0
----------------------------	--	---------------------------	---------------------------------

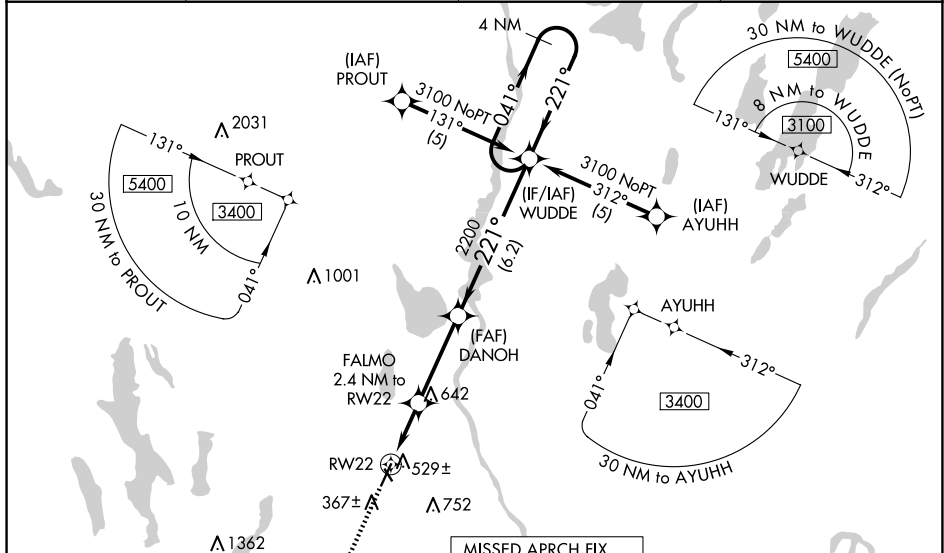


Figure 1: Instrument Landing System (ILS) and RNAV (RNP) approach chart for RWY 22 at AUBIN. The chart shows a 4 NM Holding Pattern at 3100 feet, a 4 NM glidepath, and a 4 NM final approach segment. The chart includes a table for Category A, B, C, and D, and a table for Category A, B, C, and D. The chart also includes a table for Category A, B, C, and D.

CATEGORY	A	B	C	D
LPV DA	546-1	276 (300-1)		
RNAV/VNAV DA	867-2	597 (600-2)		
RNAV MDA	780-1	510 (500-1)	780-1 3/8	510 (500-1 3/8)