

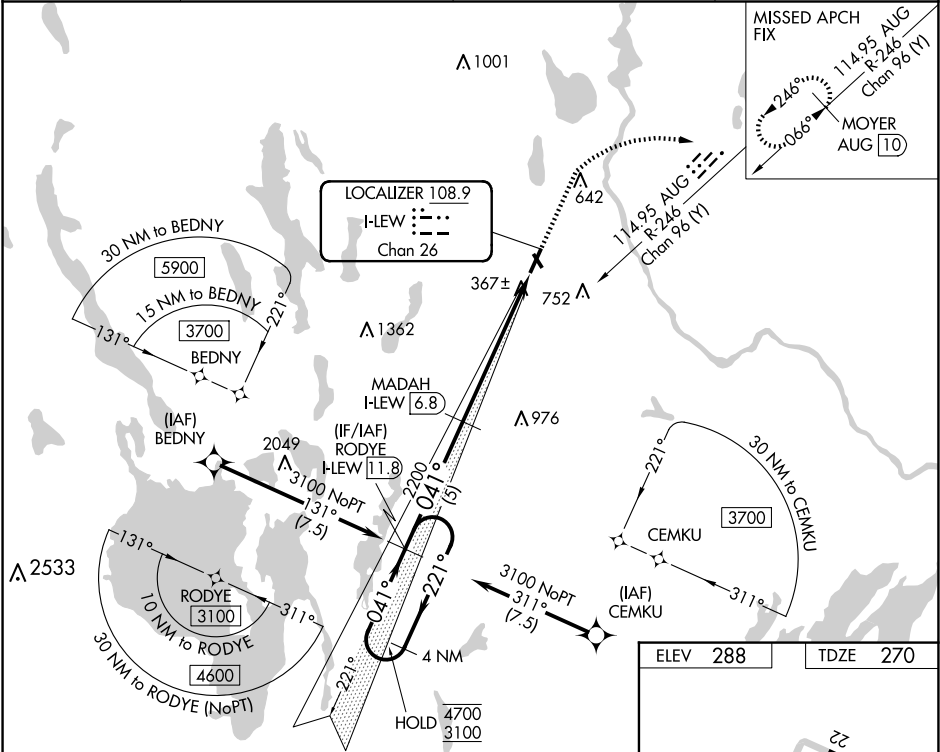
| | | | |
|---------------|---------|----------|------|
| LOC/DME I-LEW | APP CRS | Rwy Idg | 5001 |
| 108.9 | 041° | TDZE | 270 |
| Chan 26 | | Apt Elev | 288 |

ILS or LOC RWY 4

AUBURN/LEWISTON MUNI (LEW)

| | | |
|---|------------------------|---|
| DME required. RNP APCH - GPS. | MALS R | MISSED APPROACH: Climb to 900 then climbing right turn to 3000 on heading 080° and on AUG VOR/DME R-246 to MOYER/AUG 10 DME and hold. |
| <div><div></div><div>Circling to Rwy 17, 22, 35 NA at night. For inop ALS, increase S-LOC 4 Cat A visibility to 1 SM, and Cat C/D to 2½ SM.</div></div> | <div><div></div></div> | |

| | | | |
|----------|--------------------|----------|----------------|
| AWOS-3PT | PORTLAND APP CON ★ | CLNC DEL | UNICOM |
| 118.025 | 125.5 353.9 | 124.05 | 122.8 (CTAF) 0 |



| | | | | |
|---|-----------------------|-------------------------|-------------------------|-------------------------|
| 4 NM Holding Pattern | | | | |
| <div><div>4700</div><div>3100</div><div>221°</div><div>041°</div><div>041°</div><div>2200</div><div>2200</div><div>5 NM</div><div>3.7 NM</div><div>2.3 NM</div></div> | | | | |
| GS 3.00° TCH 50 | | | | |
| <div><div>900</div><div>3000</div><div>hdg</div><div>AUG R-246</div><div>MOYER AUG 10</div><div>I-LEW 3.2</div><div>I-LEW 0.9</div></div> | | | | |
| CATEGORY | A | B | C | D |
| S-ILS 4 | | 470-½ | 200 (200-½) | |
| S-LOC 4 | 1040-½ 770 (800-½) | 1040-¾ 770 (800-¾) | 1040-1¾ 770 (800-1¾) | |
| CIRCLING | 1040-1 752 (800-1) | 1040-1¼ 752 (800-1¼) | 1060-2½ 772 (800-2½) | 1120-2¾ 832 (900-2¾) |

