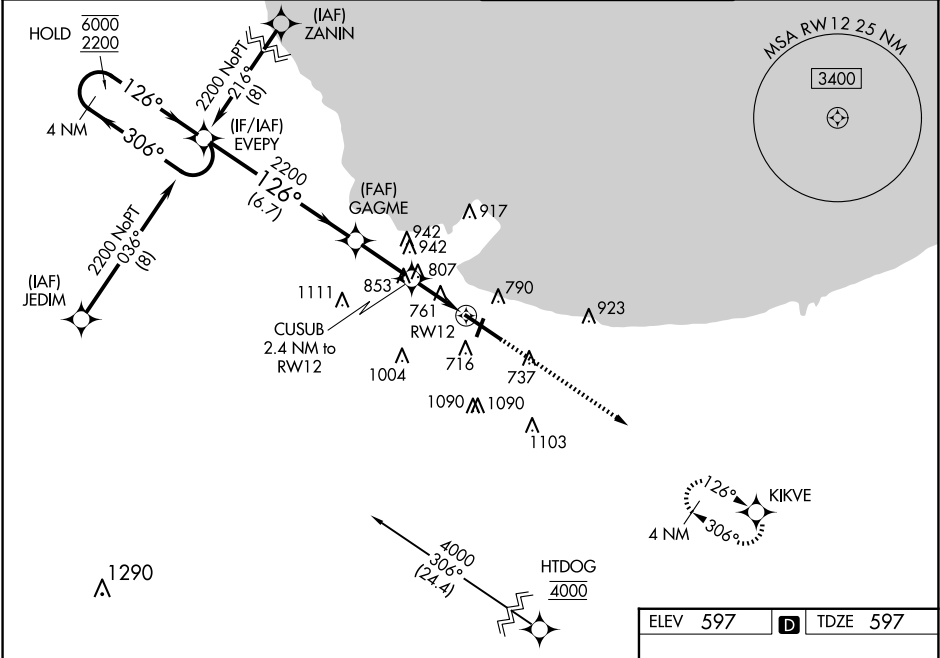


WAAS CH <b>70623</b> <b>W12A</b>	APP CRS <b>126°</b>	Rwy Idg TDZE <b>597</b> Apt Elev <b>597</b>
--	------------------------	---

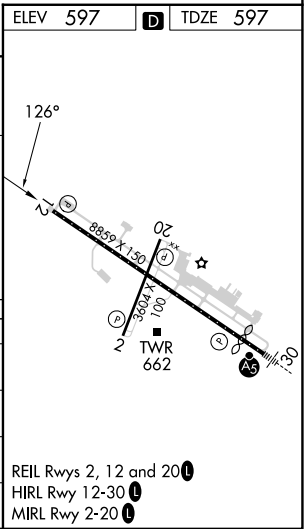
RNAV (GPS) Y RWY 12  
GARY/CHICAGO INTL (GYY)

RNP APCH - GPS.	MISSED APPROACH: Climb to 2400 direct KIKVE and hold.
-----------------	--

ATIS <b>134.575</b>	CHICAGO APP CON <b>133.1 285.6</b>	GARY TOWER ★ <b>125.6 (CTAF) 0</b>	GND CON <b>121.9</b>
------------------------	---------------------------------------	---------------------------------------	-------------------------



4 NM Holding Pattern		EVEPY	GAGME	CUSUB 2.4 NM to RWY 12	2400 KIKVE
6000 ← 306° 2200 → 126°		2200	1400	1.3 NM to RWY 12	
GP 3.00° TCH 50		6.7 NM	2.5 NM	1.1 NM	
CATEGORY	A	B	C	D	
LPV DA	797-3/4 200 (200-3/4)				
LNNAV/VNAV DA	1049-13/8 452 (500-13/8)				
LNNAV MDA	1060-1	463 (500-1)	1060-13/8	463 (500-13/8)	
CIRCLING	1160-1 563 (600-1)	1180-1 583 (600-1)	1400-21/4 803 (900-21/4)	1420-23/4 823 (900-23/4)	



EC-2, 07 AUG 2025 to 04 SEP 2025

EC-2, 07 AUG 2025 to 04 SEP 2025