

APP CRS
306°

Rwy Idg
TDZE
Apt Elev

7959
591
597

RNAV (RNP) Z RWY 30

GARY/CHICAGO INTL (GYY)

RNP AR APCH - GPS.

▼

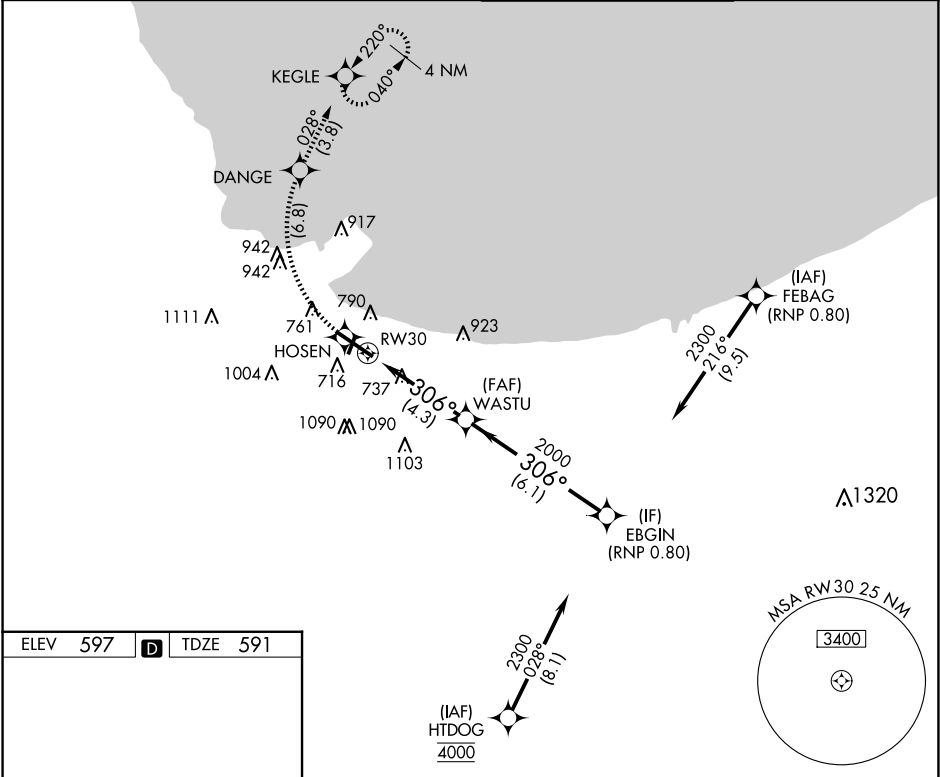
For uncompensated Baro-VNAV systems, procedure NA below -16°C or above 54°C. Missed approach requires RNP less than 1.0. For inop ALS, increase RNP 0.30 all Cats visibility to 1½ SM.

MALSR

AS

MISSED APPROACH: Climb to 2100 on track 306° to HOSEN, right turn to DANGE, then track 028° to KEGLE and hold.

ATIS 134.575	CHICAGO APP CON 133.1 285.6	GARY TOWER ★ 125.6 (CTAF) 0	GND CON 121.9
-----------------	--------------------------------	--------------------------------	------------------



ELEV 597

D

TDZE 591

REIL Rwy 2, 12 and 20

HIRL Rwy 12-30

MIRL Rwy 2-20

2100

HOSEN

DANGE

tr 028°

KEGLE

EBGIN

WASTU

2000

2300

GP 3.00°

TCH 57

4.3 NM

6.1 NM

CATEGORY	A	B	C	D
RNP 0.13 DA	976/35 385 (400-%)			
RNP 0.30 DA	1098/55 507 (600-1)			

AUTHORIZATION REQUIRED