

APP CRS  
**126°**

Rwy Idg  
TDZE  
**597**

Apt Elev  
**597**

**RNAV (RNP) Z RWY 12**

GARY/CHICAGO INTL (GYY)

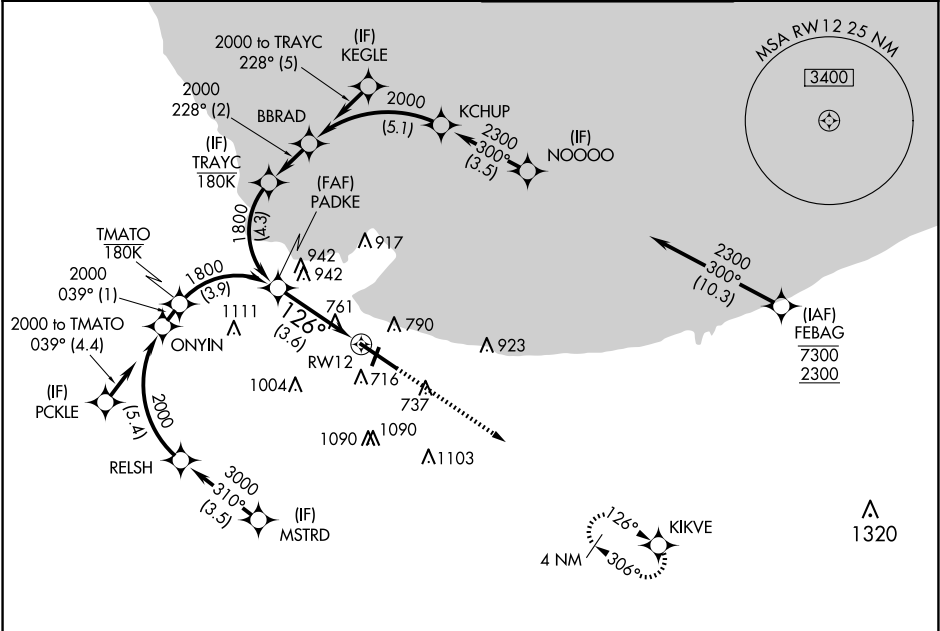
**RNP AR APCH - GPS.**

**⚠**

For uncompensated Baro-VNAV systems, procedure NA below  
-16°C or above 54°C.

MISSED APPROACH: Climb to 2400  
direct KIKVE and hold.

ATIS <b>134.575</b>	CHICAGO APP CON <b>133.1 285.6</b>	GARY TOWER ★ <b>125.6 (CTAF) 0</b>	GND CON <b>121.9</b>
------------------------	---------------------------------------	---------------------------------------	-------------------------



ELEV **597**

**D**

TDZE **597**

REIL Rwys 2, 12 and 20

HIRL Rwy 12-30

MIRL Rwy 2-20

VGSI and RNAV glidepath not coincident  
(VGSI angle 3.00/TCH 50).

2400

KIKVE

See planview for multiple IF locations.

GP 3.00°  
TCH 60

1800

126°

RW12

CATEGORY	A	B	C	D
RNP 0.10 DA		913-7/8	316 (400-7/8)	
RNP 0.30 DA		1043-1 1/8	446 (500-1 1/8)	

**AUTHORIZATION REQUIRED**