

APP CRS
203°

Rwy Ldg
TDZE
Apt Elev

3604
591
597

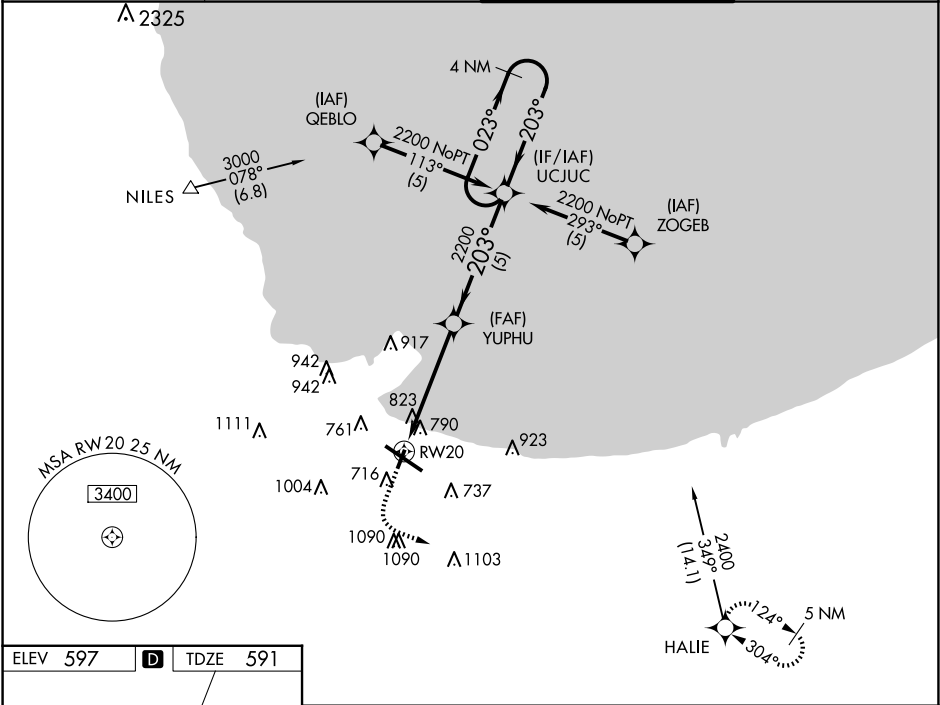
RNAV (GPS) RWY 20
GARY/CHICAGO INTL (GYY)

▼
▲

GPS or RNP-0.3 required.
DME/DME RNP-0.3 NA.

MISSED APPROACH: Climb to 1500 then climbing left turn to 2400 direct HALIE WP and hold.

ATIS 134.575	CHICAGO APP CON 133.1 285.6	GARY TOWER ★ 125.6 (CTAF) 0	GND CON 121.9
-----------------	--------------------------------	--------------------------------	------------------



ELEV 597

D

TDZE 591

203°

885° x 130

360° x 100

TWR 662

REIL Rwy 2, 12 and 20

HIRL Rwy 12-30

MIRL Rwy 2-20

1500

2400

HALIE

VGSI and descent angles not coincident (VGSI Angle 3.00/TCH 42).

4 NM Holding Pattern

YUPHU

UCJUC

023°

203°

2200

3.00° TCH 50

4.9 NM

5 NM

CATEGORY	A	B	C	D
GLS PA DA	NA			
LNAV/VNAV DA	NA			
LNAV MDA	1080-1 489 (500-1)		1080-1¼ 489 (500-1¼)	1080-1½ 489 (500-1½)
CIRCLING	1140-1 543 (600-1)	1180-1 583 (600-1)	1400-2¼ 803 (900-2¼)	1420-2¾ 823 (900-2¾)