

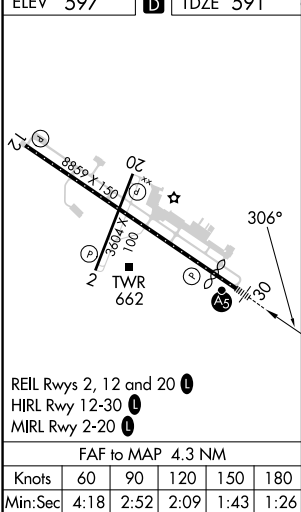
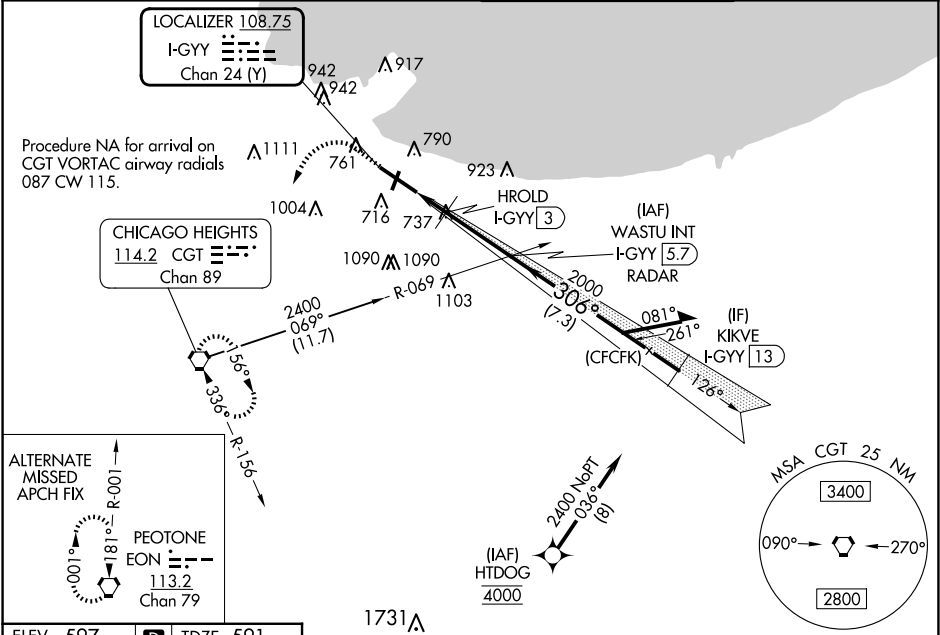
LOC/DME I-GYY	APP CRS	Rwy Idg	7959
<b>108.75</b>	<b>306°</b>	TDZE	591
Chan 24 (Y)		Apt Elev	597

ILS or LOC RWY 30

GARY/CHICAGO INTL (GYY)

DME or RADAR required. RNP APCH - GPS from HTDOG.	MALSR	MISSED APPROACH: Climb to 1500 then climbing left turn to 2400 direct CGT VORTAC and hold.
<div><div>⚠</div><div>For inop ALS, increase S-LOC-30 Cats C and D visibility to 1½ SM. HROLD fix minimums: for inop ALS increase S-LOC-30 Cats C and D visibility to RVR 6000. ** RVR 1800 authorized with use of FD or AP or HUD to DA (NA when using Chicago Midway Intl altimeter setting).</div></div>	<div><div>⚠</div><div></div></div>	

ATIS	CHICAGO APP CON	GARY TOWER ★	GND CON
<b>134.575</b>	<b>133.1 285.6</b>	<b>125.6 (CTAF) 0</b>	<b>121.9</b>



CATEGORY	A	B	C	D
S-ILS 30**	791/24 200 (200-½)			
S-LOC 30	1060/24	469 (500-½)	1060/50	469 (500-1)
CIRCLING	1160-1	1180-1	1400-2¼	1420-2¾
	563 (600-1)	583 (600-2)	803 (900-2¼)	823 (900-2¾)
HROLD FIX MINIMUMS				
S-LOC 30	1000/24	409 (500-½)	1000/40	409 (500-¾)
CIRCLING	1160-1	1180-1	1400-2¼	1420-2¾
	563 (600-1)	583 (600-1)	803 (900-2¼)	823 (900-2¾)