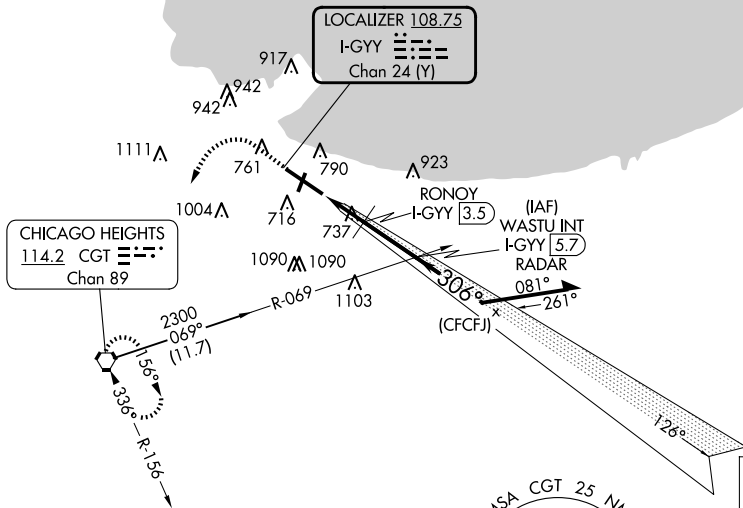


COPTER ILS or LOC RWY 30
GARY/CHICAGO INTL (GYY)


MISSED APPROACH: Climb to 1500 then climbing left turn to 2300 direct CGT VORTAC and hold.


GND CON
121.9

DME or RADAR REQUIRED

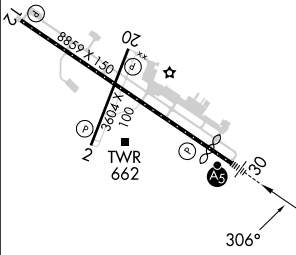


ALTERNATE
MISSED APCH FIX



PEOTONE
EON 
113.2
Chan 79

A1731



REIL Rwy 2, 12 and 20 **L**
HIRL Rwy 12-30 **L**
MIRL Rwy 2-20 **L**

FAF to MAP 4.3 NM

Knots	45	60	75	90	105
Min:Sec	5:44	4:18	3:26	2:52	2:27

Diagram illustrating a flight path with altitude and heading changes:

- Initial Altitude:** 1500 (indicated by an upward arrow).
- Altitude Change:** 2300 (indicated by a curved arrow).
- Altitude Setting:** CGT (indicated by a pentagon symbol).
- Altitude Callouts:** #1300 when using Chicago Midway Int altimeter setting. *LOC only.
- Altitude Callouts:** *I-GYY 2.6, *1240#.
- Altitude Callouts:** RONQY I-GYY 3.5, WASTU INT I-GYY 5.7.
- Altitude Callouts:** 2000, 2000.
- Heading Change:** 126°.
- Heading Change:** 306°.
- Altitude Callouts:** 2300.
- Altitude Callouts:** GS 3.00° HCH 57.
- Altitude Callouts:** Remain within 5 NM.

	← 1.1 NM	0.9 NM	← 2.3 NM →	
CATEGORY	COPTER			
S-ILS 30	791 - ¼		200 (200 - ¼)	
S-LOC 30	1240 - ¼		649 (700 - ¼)	
RONOY FIX MINIMUMS				
S-LOC 30	1000 - ¼		409 (500 - ¼)	