

APP CRS
085°

Rwy Idg
TDZE
Apt Elev
5797
808
841

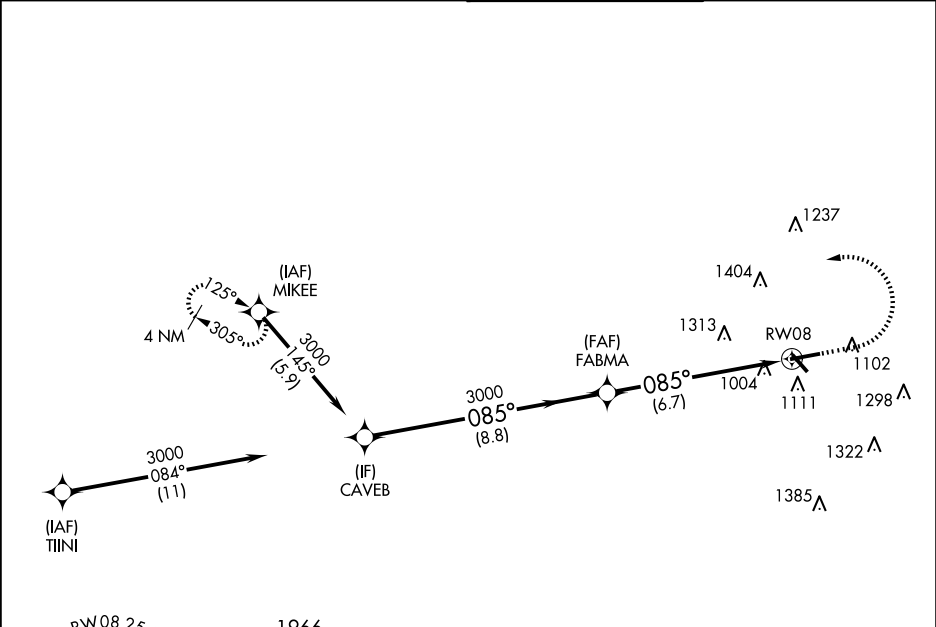
RNAV (RNP) Z RWY 8
FULTON COUNTY EXEC/CHARLIE BROWN FLD (F'TY)

▼ For uncompensated Baro-VNAV systems, procedure NA below -11°C or above 54°C. Ridge with trees to 1299' MSL between FAF and runway threshold may be obscured by clouds even with airfield ceiling at or above procedure minimums.

MALSR

MISSED APPROACH: Climb to 1600 then climbing left turn to 3000 direct MIKEE and hold.

ATIS 120.175	ATLANTA APP CON 121.0 268.7	FULTON COUNTY TOWER 118.45 257.8	GND CON 121.7 348.6
------------------------	---------------------------------------	--	-------------------------------



CAVEB

FABMA

RW08

GP 3.00°
TCH 60

3000

3000

3000

8.8 NM

6.7 NM

1600

3000

MIKEE

085°

5797 X 100

4138 X 100

TWR
1013

969

7.0% DP

CATEGORY	A	B	C	D
RNP 0.30 DA	1401-1¼ 593 (600-1¼)			

AUTHORIZATION REQUIRED

HIRL Rwy 8-26
REIL Rws 14, 26