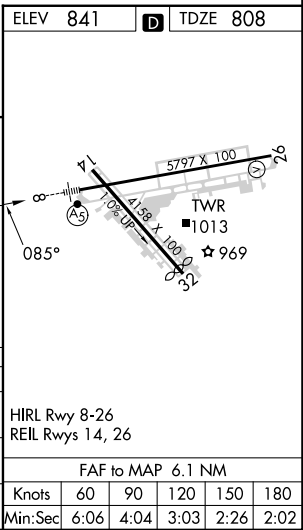
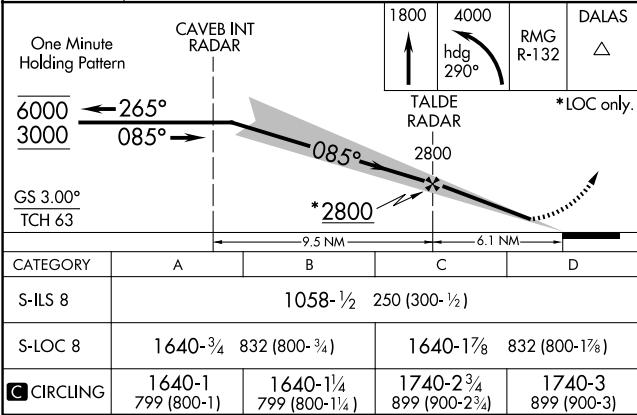
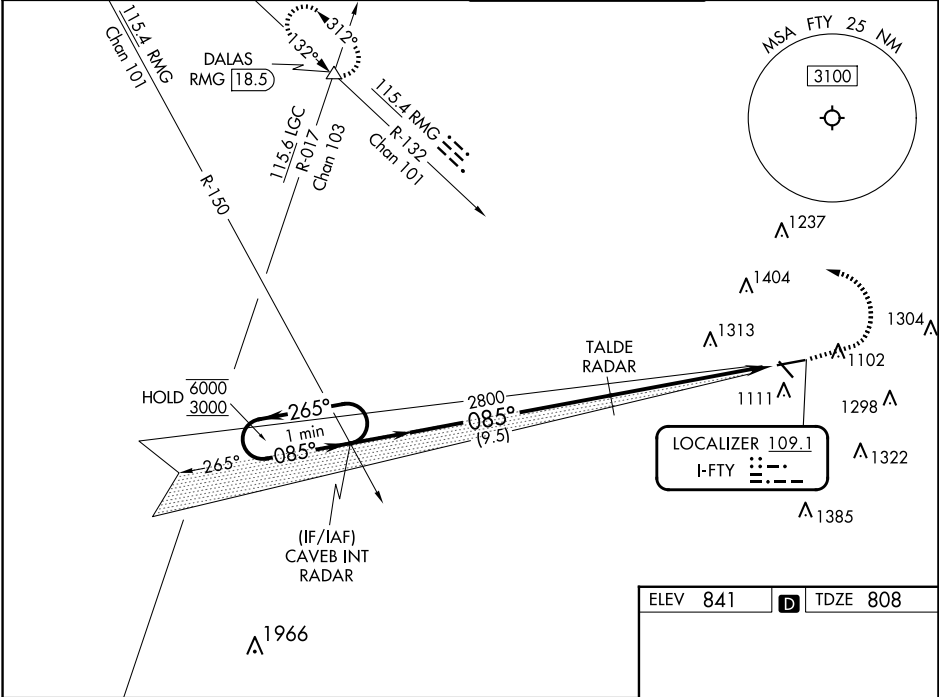


LOC I-FTY 109.1	APP CRS 085°	Rwy Idg TDZE Apt Elev 5797 808 841
---------------------------	------------------------	--

ILS or LOC RWY 8
FULTON COUNTY EXEC/CHARLIE BROWN FLD (F'TY)

RADAR required to define TALDE. RADAR required for procedure entry.	MALSR 	MISSED APPROACH: Climb to 1800 then climbing left turn to 4000 on heading 290° and RMG R-132 to DALAS INT/ RMG VORTAC 18.5 DME and hold.
▼ Circling Rwy 14, 32 NA at night. Rwy 8 helicopter visibility reduction below ¾ SM NA. ▲ For inop ALS, increase S-LOC 8 Cat A visibility to 1 SM, Cat C/D visibility to 2½ SM. Ridge with trees to 1299' MSL between FAF and runway threshold may be obscured by clouds even with airfield ceiling at or above procedure minimums.	AS 	

ATIS 120.175	ATLANTA APP CON 121.0 268.7	FULTON COUNTY TOWER 118.45 257.8	GND CON 121.7 348.6
------------------------	---------------------------------------	--	-------------------------------



ILS or LOC RWY 8