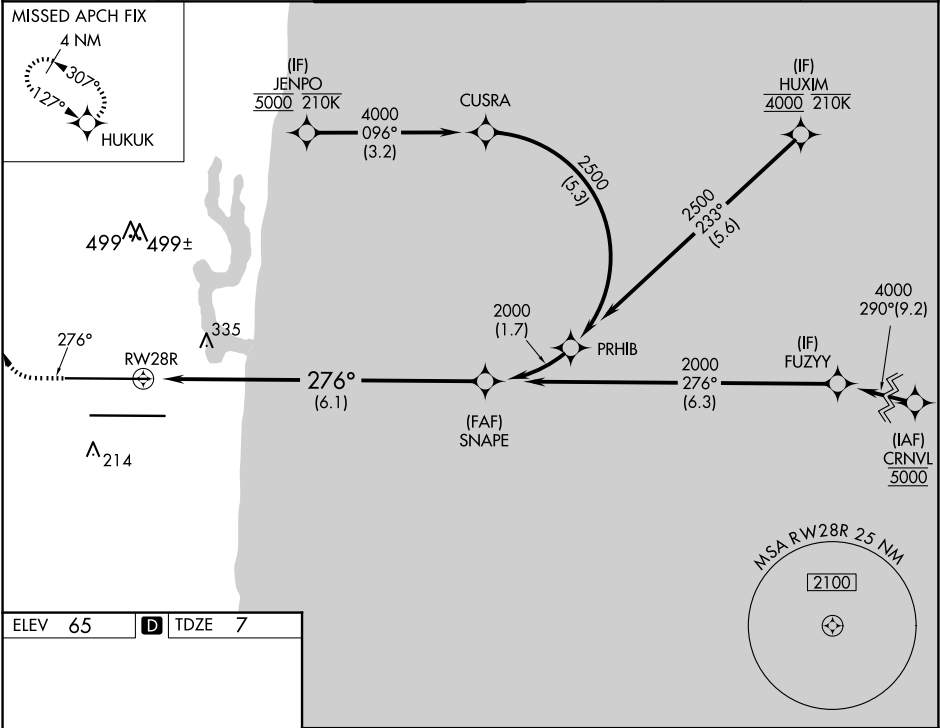


APP CRS	Rwy Idg	8394
276°	TDZE	7
	Apt Elev	65

RNAV (RNP) Z RWY 28R
FORT LAUDERDALE/HOLLYWOOD INTL (FLL)

RNP AR APCH - GPS. RADAR required. Simultaneous approach authorized. For uncompensated Baro-VNAV systems, procedure NA below 7°C or above 54°C. For inop ALS, increase RNP 0.15 visibility to RVR 5500 and increase RNP 0.30 visibility to 1¾ SM.	MALSR 	MISSED APPROACH: Climb to 800 then climbing right turn to 4000 direct HUKUK and hold, continue climb-in-hold to 4000.
--	-----------	---

D-ATIS 135.0	MIAMI APP CON 133.775 285.6	FORT LAUDERDALE TOWER 119.3 257.8	GND CON 121.4	CLNC DEL 128.4	CPDLC
-----------------	--------------------------------	--------------------------------------	------------------	-------------------	-------



ELEV 65 D TDZE 7

800 4000 HUKUK
VGSI and RNAV glidepath not coincident (VGSI Angle 3.00/TCH 69).
See planview for multiple IF locations.

RW28R
276°
SNAPE
2000
2000
GP 3.00°
TCH 49

CATEGORY	A	B	C	D
RNP 0.15 DA		362/40	355 (300-¾)	
RNP 0.30 DA		618-1⅓	611 (600-1⅓)	

HIRL Rwy 10L-28R and 10R-28L

AUTHORIZATION REQUIRED

SE-3, 07 AUG 2025 to 04 SEP 2025

SE-3, 07 AUG 2025 to 04 SEP 2025