

WAAS CH 58336 W28B	APP CRS 276°	Rwy Idg TDZE 65 Apt Elev 65
--	------------------------	---

RNAV (GPS) RWY 28L

FORT LAUDERDALE/HOLLYWOOD INTL (FLL)

RNP APCH-GPS.

▼

▲

Inop table does not apply to LPV. For uncompensated Baro-VNAV systems, LNAV/VNAV NA below 7°C or above 54°C. Simultaneous approach authorized. LNAV procedure NA during simultaneous operations. Use of FD or AP required during simultaneous operations.

MALSF

MISS

ED

MISS

ED

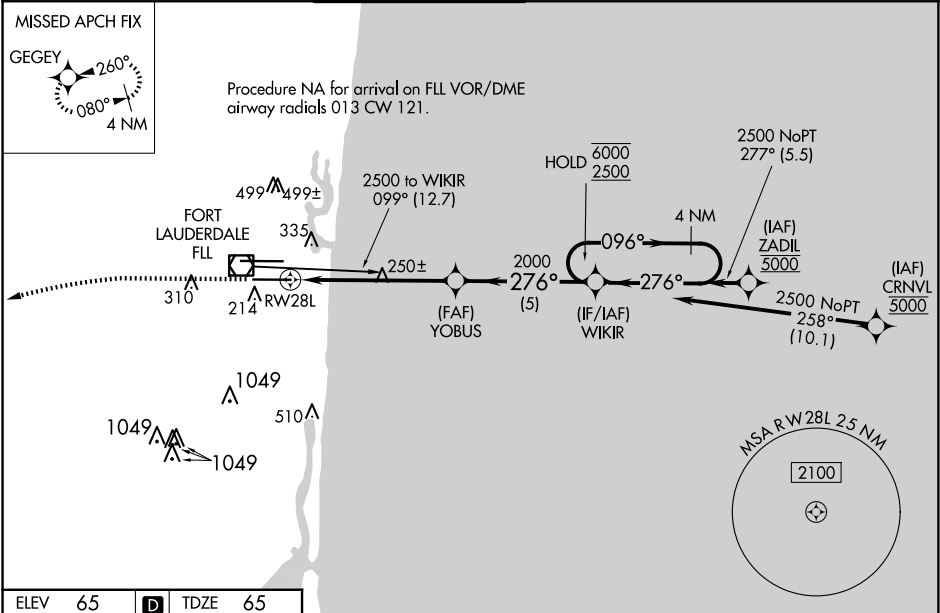
MISS

ED

MISS

ED

D-ATIS 135.0	MIAMI APP CON 133.775 285.6	FORT LAUDERDALE TOWER 119.3 257.8	GND CON 121.4	CLNC DEL 128.4	CPDLC
------------------------	---------------------------------------	---	-------------------------	--------------------------	-------



ELEV 65

D

TDZE 65

1000

3000

GEGEY

VGSI and RNAV glidepath not coincident
(VGSI Angle 3.00/TCH 69).

WIKIR

4 NM
Holding Pattern

YOBUS

2000

1.2 NM to
RW28L

276°

096°

6000

2500

GP 3.00°
TCH 53

1.2 NM

4.7 NM

5 NM

CATEGORY

A

B

C

D

LPV DA

265/40

200 (200-¾)

LNAV/VNAV DA

459/45

394 (400-⅞)

LNAV MDA

500/40

435 (500-¾)

500/50

435 (500-1)

CIRCLING

680-1

615 (700-1)

800-2
735 (800-2)

800-2¼
735 (800-2¼)