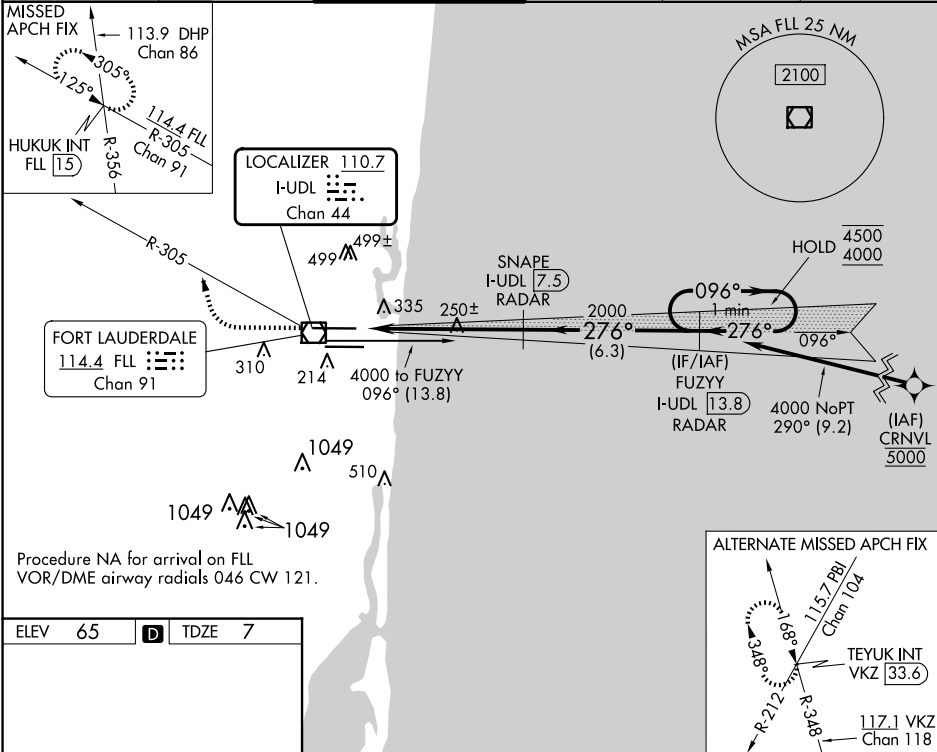


LOC/DME I-UDL 110.7 Chan 44	APP CRS 276°	Rwy Idg TDZE Apt Elev 8394 7 65
---	------------------------	---

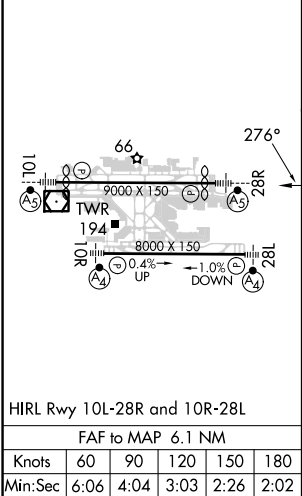
ILS or LOC RWY 28R
FORT LAUDERDALE/HOLLYWOOD INTL (FLL)

DME or RADAR required. RNP APCH - GPS from CRNVL.	MALSR A5	MISSED APPROACH: Climb to 800 then climbing right turn to 4000 on FLL VOR/DME R-305 to HUKUK INT/FLL 15 DME and hold, continue climb-in-hold to 4000.
 Simultaneous approach authorized. Inop table does not apply to S-ILS 28R. For inop ALS, increase S-LOC 28R Cats C and D visibility to 1 3/8 SM.		

D-ATIS 135.0	MIAMI APP CON 133.775 285.6	FORT LAUDERDALE TOWER 119.3 257.8	GND CON 121.4	CLNC DEL 128.4	CPDLC
------------------------	---------------------------------------	---	-------------------------	--------------------------	-------



ELEV 65	D	TDZE 7
---------	---	--------



800	4000	HUKUK INT	VGSI and ILS glidepath not coincident (VGSI Angle 3.00/TCH 69).	FUZZY I-UDL 13.8 RADAR	One Minute Holding Pattern
I-UDL 1.4	I-UDL 2.8	SNAPE I-UDL 7.5 RADAR	2000	276°	096°
1.4 NM	4.7 NM	6.3 NM			
CATEGORY	A	B	C	D	
S-ILS 28R	257/40	250 (200-3/4)			
S-LOC 28R	520/24	513 (500-1/2)	520/55	513 (500-1)	
CIRCLING	680-1	615 (700-1)	800-2	800-2 1/4	
			735 (800-2)	735 (800-2 1/4)	