

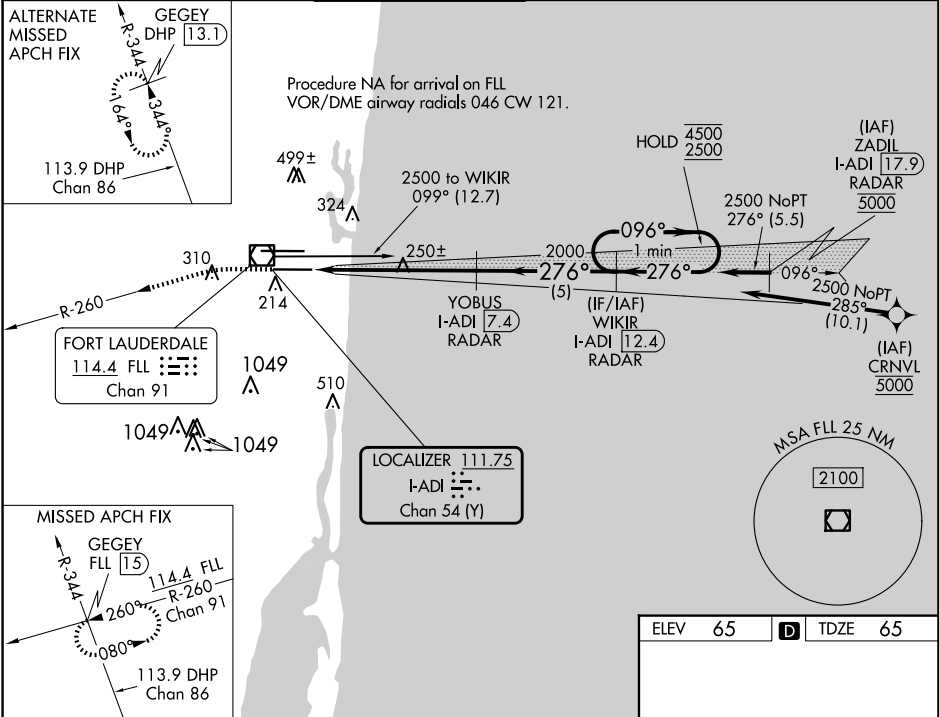
LOC/DME I-ADI 111.75 Chan 54 (Y)	APP CRS 276°	Rwy Idg TDZE Apt Elev 8000 65 65
--	------------------------	--

ILS or LOC RWY 28L

FORT LAUDERDALE/HOLLYWOOD INTL (FLL)

DME or RADAR required. RNP APCH-GPS. From CRNVL. RADAR required for procedure entry at ZADIL.	MALSF	MISSED APPROACH: Climb to 1000 then climbing left turn to 3000 on FLL VOR/DME R-260 to GEGEY INT/FLL 15 DME and hold.
Inop table does not apply to S-ILS-28L. Simultaneous approach authorized.		

D-ATIS 135.0	MIAMI APP CON 133.775 285.6	FORT LAUDERDALE TOWER 119.3 257.8	GND CON 121.4	CLNC DEL 128.4	CPDLC
------------------------	---------------------------------------	---	-------------------------	--------------------------	-------



1000	3000	FLL R-260	GEGEY INT	VGSI and ILS glidepath not coincident (VGSI Angle 3.00/TCH 69).	WIKIR I-ADI 12.4 RADAR	One Minute Holding Pattern
				YOBUS I-ADI 7.4 RADAR		
				I-ADI 1.5	I-ADI 2.6	2000
						276° 096° 4500 2500
						GS 3.00° TCH 53
						1.2 NM 4.7 NM 5 NM
CATEGORY	A	B	C	D		
S-ILS 28L		265/40	200 (200-¾)			
S-LOC 28L	500/40	435 (500-¾)	500/50	435 (500-1)		
CIRCLING	680-1	615 (700-1)	800-2 735 (800-2)	800-2¼ 735 (800-2¼)		

ELEV 65	TDZE 65
HRL Rwy 10L-28R and 10R-28L	
FAF to MAP 5.9 NM	
Knots	60 90 120 150 180
Min:Sec	5:54 3:56 2:57 2:22 1:58

ILS or LOC RWY 28L

SE-3, 07 AUG 2025 to 04 SEP 2025

SE-3, 07 AUG 2025 to 04 SEP 2025